



Charles Sturt
University

WESTERN SYDNEY
UNIVERSITY



Interested in a career in medicine?

Study the Doctor of Medicine, a Joint Program
in Medicine from Charles Sturt University and
Western Sydney University.

→ csu.edu.au/medicine



Australian Government



Murray-Darling
Medical Schools Network
Funded by the Australian Government

A message from our Dean of Rural Medicine



Hello and welcome to our Doctor of Medicine, a Joint Program in Medicine from Charles Sturt University and Western Sydney University.

I'm very excited to oversee a School of Rural Medicine that will not only enable students like you to develop your skills while studying in rural areas, but encourage you to remain there as you forge your career in medicine.

Read on to find out everything you need to know about our exciting program.

Professor Lesley Forster

All about the Doctor of Medicine

It's clear there's a continuing shortage of doctors in the country that is contributing to Australia's rural health crisis.

With our Doctor of Medicine you can study regionally, on campus in Orange and through extended clinical placements in various rural locations throughout New South Wales and Victoria, and be at the cutting edge of the future of medicine in Australia.

Every community is different. And their healthcare needs are different. That's why we train a generation of high-quality medical professionals, equipped with the knowledge and experience to champion the health of our rural, regional and remote communities.

Our students will be prepared for a rewarding career in medicine and help us address the shortage of doctors in rural and regional Australia. This is your opportunity to make a difference in your community.

Course at a glance

Name: Doctor of Medicine (Joint Program in Medicine)

UAC code: 725505 (Orange)

Fee type: Commonwealth supported place (CSP)

Duration: Five years full-time, undergraduate entry

Where: Two years on-campus study in Orange and three years of clinical placements across NSW and Victoria

When: Commence study in February each year (one annual intake only)

Selection rank: 95.5 (non-rural) or 91.5 (Rural Entry Admissions Scheme)

Additional admission requirements: University Clinical Aptitude Test for Australia and New Zealand (UCAT ANZ) and Multi-Station Mini Interview



Learn specialised skills from the start

You'll get hands-on from the very start through this highly practical course with clinical learning from your first weeks of study. You'll explore diverse clinical settings and then in your third, fourth and fifth years you'll extend your professional skills through full-time clinical and community placements. The course combines problem-based learning and clinical practice with leading theory and research.

Broad range of medical training

Throughout your clinical placements you'll cover a broad range of general, specialist and inter-professional training. This will include critical care, general practice, emergency medicine, mental health, obstetrics and gynaecology, paediatrics, surgery, and First Nations Peoples' health. If you're interested in research, you can choose to study a research year after your second year of the course. This will allow you to gain a Bachelor of Medical Research before continuing to complete the final years of the Doctor of Medicine.

Learn in modern facilities

You'll learn in our state-of-the-art facilities, including our brand new academic hub, clinical skills learning centre, rural health simulation centre and new research centres located on campus and opposite Orange Hospital. You'll be well prepared for your future in medicine when you get hands-on in our anatomy teaching laboratory, simulation hospital wards, interactive study pods and ultrasound room.

Work closely with your future industry

Throughout the course you'll work closely with the local health services and community you are studying in. Extended clinical placements are just one of the ways you'll be well prepared to take on your medical internship before you step into your future career in medicine.

AHPRA registration

You'll be eligible to apply for provisional registration by the Medical Board of Australia (Australian Health Practitioner Regulation Agency). Then you can undertake a period of accredited internship training to become eligible for general AHPRA registration.



Course structure and delivery

The journey to becoming a doctor is challenging and rewarding. Studying medicine requires dedication and hard work, so you should expect a full-time study load during your degree.

The Doctor of Medicine is a problem-based learning hybrid program with two years of initial campus-based learning in the basic sciences (anatomy, biochemistry, microbiology, pharmacology, physiology and population health), clinical skills and evidence-based medicine.

Most of your training from the third year of the course will be spent in clinical placements that cover the broad range of general, specialist and inter-professional training necessary to ensure you are prepared for your medical internship. You'll also be required to undertake a research project carried out in year three and four of your course.

Course requirements

Qualification for the award (Doctor of Medicine) requires successful completion of 320 credit points, with one subject worth 64 credit points completed each year. All the subjects (below) are core and compulsory.

- MED 111 Clinical Sciences 1
- MED 211 Clinical Sciences 2
- MED 311 Applied Clinical Sciences 1
- MED 411 Applied Clinical Sciences 2
- MED 511 Applied Clinical Sciences 3

“The program’s focus is on rural and regional health and is heavily backed by an arsenal of experienced doctors and several rural clinical schools. These placements are an amazing opportunity to contribute to, learn from and enjoy the pleasures of rural living. I greatly appreciate its practical focus, as many other courses do not offer these unique and insightful experiences from the get-go, and the shorter 5-year program means I can start my career just that bit sooner.”



Antez Varghese

Charles Sturt
medicine student



The Rural Generalist Placement Program

The School of Rural Medicine has devised the Rural Generalist Placement Program which includes a network of clinical schools, that allows you to study and work in rural and regional locations. The program extends over the full five years of the Doctor of Medicine degree.

Not only do you learn and work within the clinical schools, but you'll also be seconded to regional base hospitals for training in specialist disciplines and for pre-internship placements. You'll return each year to the same rural and regional community – allowing you to build relationships and connections with the community and experience the attraction of permanently locating to these areas.

It's a unique model. It encourages you to see the potential and the importance of a career in rural medicine. It not only produces outstanding rural practitioners, but it also forms the foundation for future research and research partnerships.

Year 1

Clinical Sciences 1

Two-week general practice and rural hospital placement.

Year 2

Clinical Sciences 2

Two-week general practice and rural hospital placement.

Year 3

Applied Clinical Sciences 1

One-year rural generalist placement in general practice and rural hospital.

Year 4

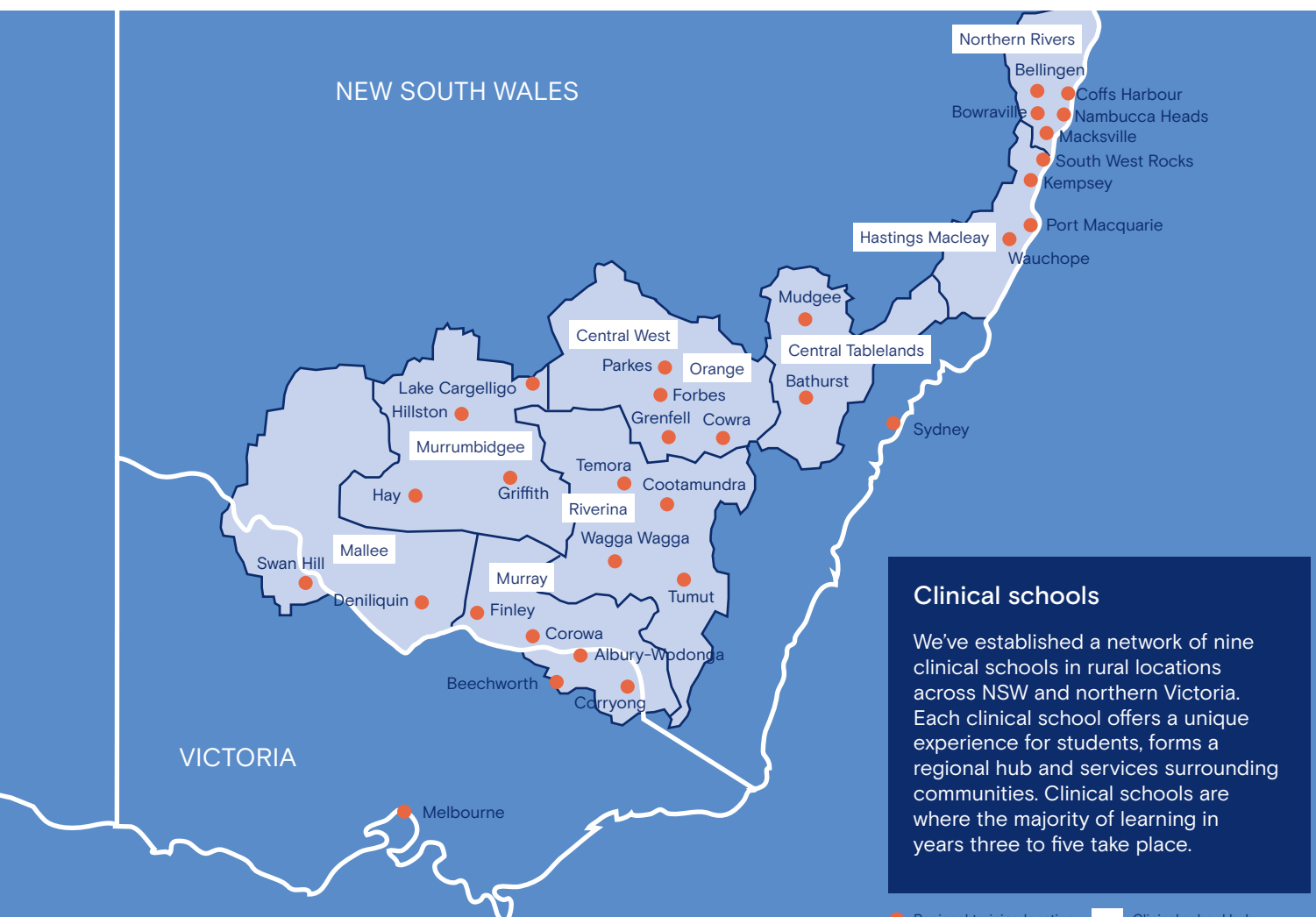
Applied Clinical Sciences 2

Paediatrics, obstetrics and gynaecology, psychiatry, general practice, emergency medicine, oncology and palliative care.

Year 5

Applied Clinical Sciences 3

Medicine, surgery, First Nations health, emergency medicine, anaesthetics, intensive care and general practice.



Career opportunities

Our Doctor of Medicine is your first step in training for your career in medicine. When you graduate, you'll be qualified to be a medical intern in Australia and New Zealand.

Internship

After graduation, you will begin your medical career as an intern. After one year you'll be eligible for general registration with APHRA, to begin the next phase of your medical training.

Address the rural doctor shortage

We need more doctors in the regions, for the regions. Play your part in addressing the shortage of doctors in rural and regional Australia. You'll be well prepared for working in First Nations and remote healthcare. You could also pursue a career in medical research, working alongside scientists to help develop cures for illnesses.

Pursue a specialty

Our Doctor of Medicine will prepare you to become a specialist rural generalist general practitioner (GP) or a non-GP specialist focusing on a specific area of medicine. As a rural generalist GP, you'll use your specialised medical skills to work in a rural community and provide emergency care, hospital in-patient care, general practice and advanced specialised skills whilst applying a population health approach. You'll work as part of a multi-professional and multi-disciplinary team with other health providers and specialists.



“Exposure to rural health disparities has motivated me to be the best doctor I can be to ensure I competently provide medical care as a rural practitioner when I complete my degree.”



Eve West

Charles Sturt
medicine student

How to apply

To be eligible for a place in the Joint Program in Medicine you must be an Australian citizen or permanent resident. The application process includes the following steps.

- Successfully sit UCAT ANZ.
- Apply through UAC.
- Sit a Multi-Station Mini Interview (MMI).

Here's how it works

UCAT ANZ

The University Clinical Aptitude Test for Australia and New Zealand (UCAT ANZ) is an external assessment tool used by Australian universities as part of the medical entry application process. You'll need to register for UCAT ANZ between March and May and successfully sit the test in July. Your UCAT ANZ results will then be released to the university in September. The UCAT ANZ scores will determine a ranked list for interviews.

UAC

Apply for the Doctor of Medicine through the Universities Admissions Centre (UAC). The UAC code is 725505. When completing your application you must indicate Orange as your preferred campus for the Doctor of Medicine. There is an ATAR requirement for entry.

- **95.5 ATAR non-rural (general admission)**
- **91.5 ATAR for Rural Entry Admission Scheme**

Applicants with current or previous university study will be assessed on their grade point average (GPA). For more information about minimum GPA's, check out the entry requirements at study.csu.edu.au/medicine

Rural Entry Admission Scheme (REAS)

The Joint Program in Medicine is committed to providing access to medical education for rural and regional students. We strongly encourage students from rural and regional backgrounds to apply for the Doctor of Medicine.

To be considered for this scheme you must be an Australian citizen or permanent resident and be able to prove you have resided for at least five years consecutively or 10 years cumulatively in a rural and/or remote location.*

To determine your eligibility for the Rural Entry Admission Scheme, check your postcode online through DoctorConnect. Use the health workforce locator to check your residential location.

To apply for consideration under the scheme, you'll need to download and complete a community member confirmation form.[^] This form must be submitted as part of your UAC application. You can download the form at study.csu.edu.au/medicine

First Nations applicants

If you're a First Nations applicant, you will need to apply through UAC. There is a separate process for admission, including confirmation documentation and a panel interview that will be managed by the university.

Multi-Station Mini Interview

Interviews will be held in November. Where possible, interviews will be held via Zoom, with interviewers located at Orange.

Interviews are conducted as a Multi-Station Mini Interview. You'll be asked a series of questions in relation to a scenario that is presented to you at each of the six interview stations. At each station, questions will be asked by a different interviewer. You'll have eight minutes to respond to the questions at each station before moving to the next station. There will be a short break between each station.

Selection criteria

- UCAT ANZ - 25 per cent
- Multi-Station Mini Interview - 75 per cent
- Academic score:
 - 91.5 (REAS)
 - 95.5 (non REAS)
- Location based
 - 80 per cent of invitations to interview are for residents of NSW
 - 20 per cent of interviews are for interstate applicants

*Regions defined as RA2-5 within Australian Statistical Geography Standard - Remoteness Area (ASGS-RA 2016) of 2 to 5 for a minimum of five years consecutively or 10 cumulative years will be classified as rural and/or remote.

[^]The SRM will conduct a randomised audit of the Community Member forms. Applicants who do not provide true and accurate information in support of their application will be dealt with by the appropriate policies and rules of Charles Sturt University.

What's your back-up plan?

Getting into medicine is competitive – we get it. And we know how stressful the whole process can be. That's why having a backup plan is a great strategic move. Not only will it take off some of the stress of applying, but it also means that you have a Plan B.

Consider applying for another course that provides a rewarding career in health, while also offering a valuable foundation to studying undergraduate or postgraduate medicine. We offer a wide range of health and science courses at Charles Sturt. From pharmacy to physio and medical radiation science, not to mention occupational therapy, nursing, medical laboratory science, and health and medical science. When you study any course with us, you could be eligible to apply for medicine again next year as a Charles Sturt pathway applicant.

Ready to get your Plan B locked and loaded? Check out our Bachelor of Health and Medical Science. This versatile degree is a great stepping-stone to further study in medicine, pharmacy, epidemiology or dentistry. A diverse and flexible qualification, available on campus at Orange or online, it provides a strong foundation for further study or a career in the health industry. It's the perfect way to prepare for future studies in areas such as medicine or allied health.

Find out more → study.csu.edu.au/health-med-science

Important dates and deadlines

March: UCAT ANZ registration opens and Medicine Information Night held

April: UAC applications for medicine open

May: UCAT ANZ registration closes

July: UCAT ANZ testing

September: UAC applications close

October/November: applicants invited to interview

November: Multi-Station Mini Interviews

December: ATARs released

January: UAC offers for medicine released

February: first-year Doctor of Medicine students commence

Charles Sturt pathway

A minimum of six interview places will be guaranteed for rural students currently studying a Charles Sturt University course, based on their UCAT ANZ results. Entry is not guaranteed.

Find out more


→ study.csu.edu.au/admission-pathways

Scholarships

Applying for the Doctor of Medicine? You may be eligible for a number of scholarships.

Find out more

→ study.csu.edu.au/scholarships

 1800 275 278 (free call within Australia)
+61 1800 275 278 (callers outside Australia)

 csu.edu.au/medicine

 [charlessturtuni](https://twitter.com/charlessturtuni)

 [charlessturtuni](https://facebook.com/charlessturtuni)

 [charlessturtuni](https://instagram.com/charlessturtuni)

 insight.csu.edu.au

 [charlessturtuni](https://youtube.com/charlessturtuni)

 [charlessturtuni](https://snapchat.com/charlessturtuni)

 [charlessturtuni](https://tiktok.com/charlessturtuni)