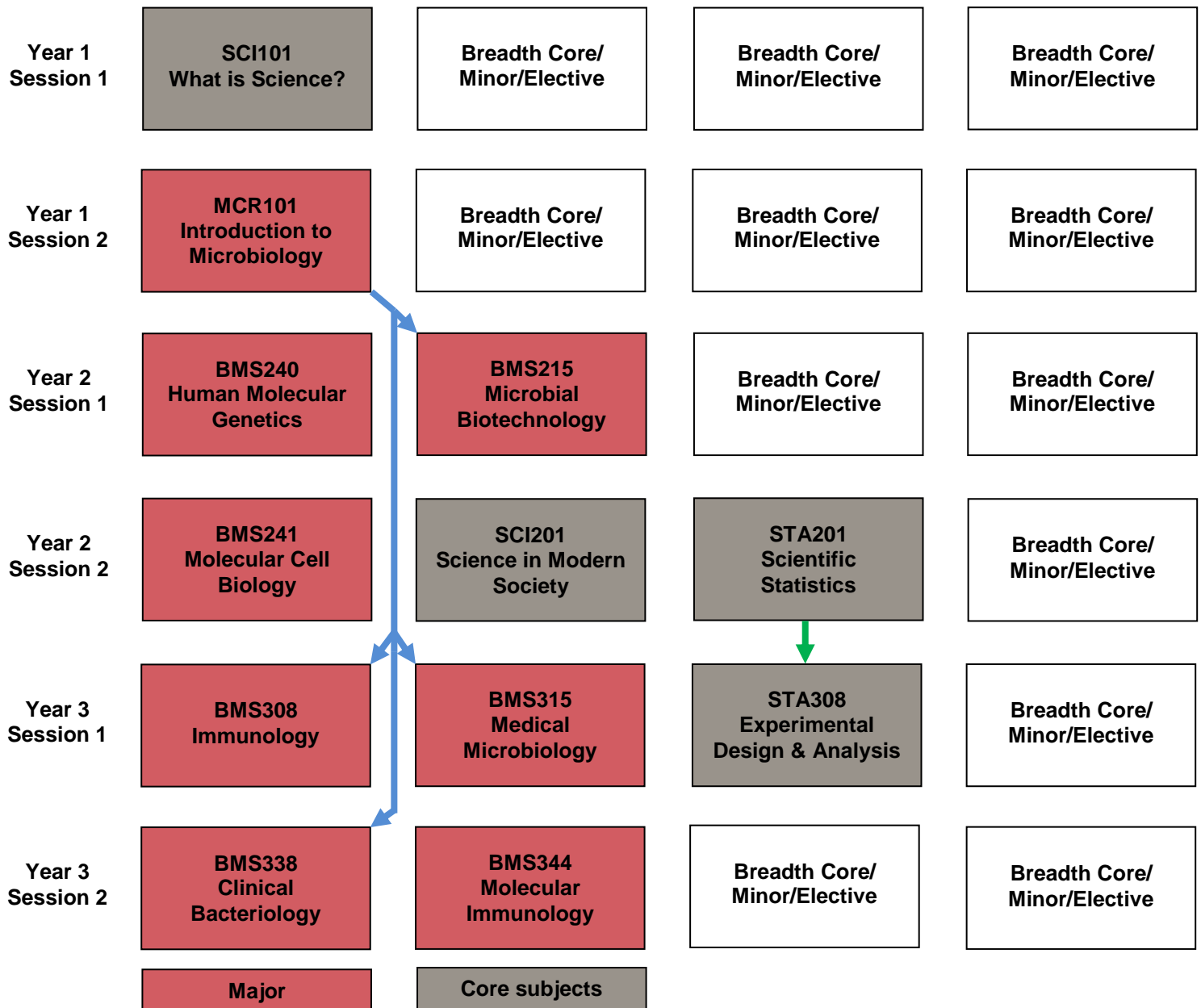


Microbiology and Immunology Major (Full-time Study)


* Arrows indicate pre-requisite subjects. Assumed knowledge may also apply and should be checked in the Subject Handbook. Minor and elective subjects may also have pre-requisites and/or assumed knowledge - consult the Subject Handbook.

* The enrolment pattern for the electives and the minor subjects depends on the subjects you select, their prerequisites and their session of offering. A minimum of 4 subjects (32 points) are required in a study area (identified by subject code) for a minor, with at least 50% at level 2 or above - consult the Course Handbook for minor subjects. 50% of your elective subjects must be at level 2 or higher.

* Breadth core subjects: 2 additional subjects are to be chosen, in the Microbiology and Immunology major, from MTH105 (Session 1), CHM108 (Session 1), BIO100 (Session 1), PSC102 (Session 1), PHY107 (Session 1), GEO164 (Session 2). Note that your minor may further restrict which subjects you choose. These subjects will broaden your scientific knowledge and therefore cannot align with the disciplines studied in your major or minor. They can however be a component of a second minor - consult the Course Handbook for minor subjects. The enrolment pattern for these subjects depends on their session of offering.