

# Ensuring inclusive and equitable outcomes of technical solutions to fisheries

Dr. Victoria Syddall

Managing Director, Marine Scientist and GESI Expert

Auckland, New Zealand

E: [Victoria@orcaconsulting.co.nz](mailto:Victoria@orcaconsulting.co.nz)



Sketch from BOBP-IGO, 2022

# Overview

- Introduction
- Governance considerations
- FishTech MTR & Case Study
- Lessons Learned





The background of the slide is a complex, abstract fractal pattern. It features a dense network of fine, radiating lines in various shades of teal, blue, and green, creating a textured, organic appearance. The lines often form circular or fan-like shapes, giving the overall image a sense of depth and movement.

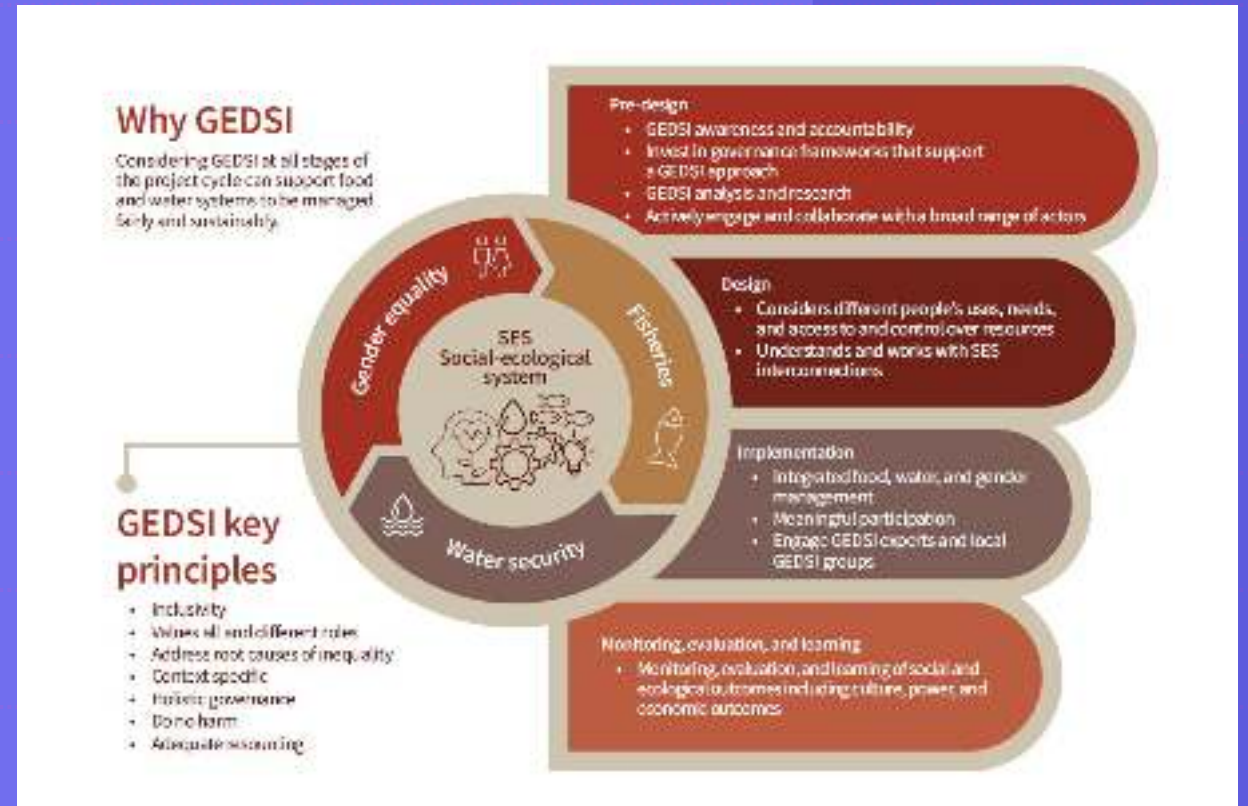
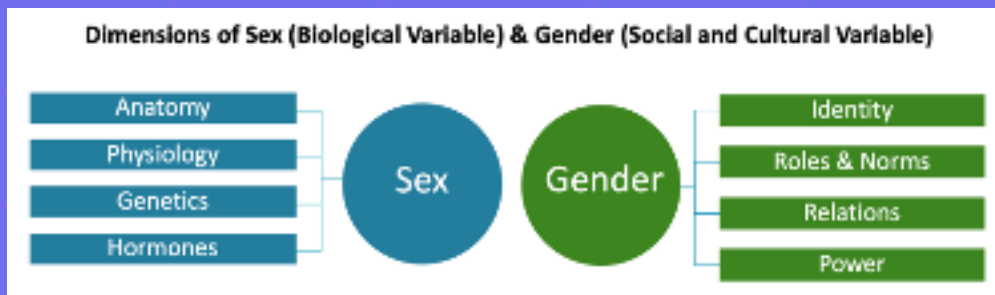
# Introduction

Why does gender equality and social inclusivity matter in fisheries?



# GEDSI & Fisheries

- What is gender? and what is social inclusion?
- Why does GEDSI matter? And why should we think about it?



Predominant gendered roles in small-scale fisheries									
Pre-fishing		Fishing		Fish Processing		Trading		Governance, Finance, Household	
Women	Men	Women	Men	Women	Men	Women	Men	Women	Men
<ul style="list-style-type: none"> <li>• Mend fishing gears</li> <li>• Assist in boat &amp; fishing gear maintenance &amp; cleaning</li> <li>• Prepare food for fishermen</li> </ul>	<ul style="list-style-type: none"> <li>• Prepare boat &amp; fishing gears</li> <li>• Boat preparation</li> <li>• Boat maintenance</li> <li>• Boat stocking</li> </ul>	<ul style="list-style-type: none"> <li>• Post fishing</li> <li>• Household fishing</li> <li>• Assist fishing operation</li> </ul>	<ul style="list-style-type: none"> <li>• Captain / manager</li> <li>• Boat fishing (usually for fish and higher value species)</li> </ul>	<ul style="list-style-type: none"> <li>• Cleaning fish</li> <li>• Grading</li> <li>• Sorting / drying fish</li> <li>• Sorting &amp; purchase of raw materials (e.g. salt)</li> </ul>	<ul style="list-style-type: none"> <li>• Sorting fish on board</li> <li>• Loading &amp; unloading fish</li> <li>• Assist in processing</li> </ul>	<ul style="list-style-type: none"> <li>• Retail &amp; wholesale trade of fish at local markets, door-to-door, street</li> </ul>	<ul style="list-style-type: none"> <li>• Sell to distant markets via intermediaries &amp; exporters</li> <li>• Packaging &amp; transporting</li> </ul>	<ul style="list-style-type: none"> <li>• Science &amp; technical administration</li> <li>• Management &amp; decision making in conservation and use</li> <li>• Non formal education (e.g. of children, elderly) &amp; suggestions of farmers</li> <li>• Household finance management</li> <li>• Owners of processing businesses</li> </ul>	<ul style="list-style-type: none"> <li>• Management of business &amp; technical advice</li> <li>• Decision making in conservation &amp; use</li> <li>• Ownership &amp; access to boats, other fisheries, permits</li> </ul>
Prepare fishing gears and boat		Catch fish and manage fishing operations		Sort fish on landing, make fish products, clean fishing gear		Retail and wholesale trade of fish (packaging and transportation)		Science management decision making, science and technical support, finance and accounting of fisheries businesses, running household	

# GEDSI Constraints and Opportunities



## Constraints

Women have smaller enterprises, lower pay, risky work

Gender-blind and socially exclusive policies and lack of disaggregated data undermine women's contributions and further excludes others

Women have to fight for their basic rights and decision-making power

Fisheries and aquaculture modernisation has downsides for women



## Opportunities

Women's empowerment and group action help overcome constraints

The whole fish sector wins when women's and other minority group's contributions are valued

Society and the environment benefit when all are empowered

Applying GEDSI into action in technical solutions to fisheries benefits households and communities

# GEDSI Constraints and Opportunities

(Williams & Syddall, 2022)

**Table 2.** Gendered characteristics of fish value chains that combine and interact to exclude women from fisheries and aquaculture benefits as technology and associated factors change.

---

## 1. GENDER DIVISIONS OF LABOR

- Women least likely to work in primary production (fishing, farming)
- Women's productive work strongly differentiated from that of men, despite blurred lines and overlaps
- Women's reproductive work not valued, recognized, or readily integrated into the productive nodes
- How women's skills defined and valued has a social component

---

## 2. SECTORAL FOCUS ON PRIMARY PRODUCTION

- Fisheries agencies focus on primary production
- Fishing/farming technology changes have flow-on effects to the work done commonly by women in other value chain nodes
- Little attention to technology used by women
- Non-fisheries agencies address other nodes, except production related to trade and consumption

---

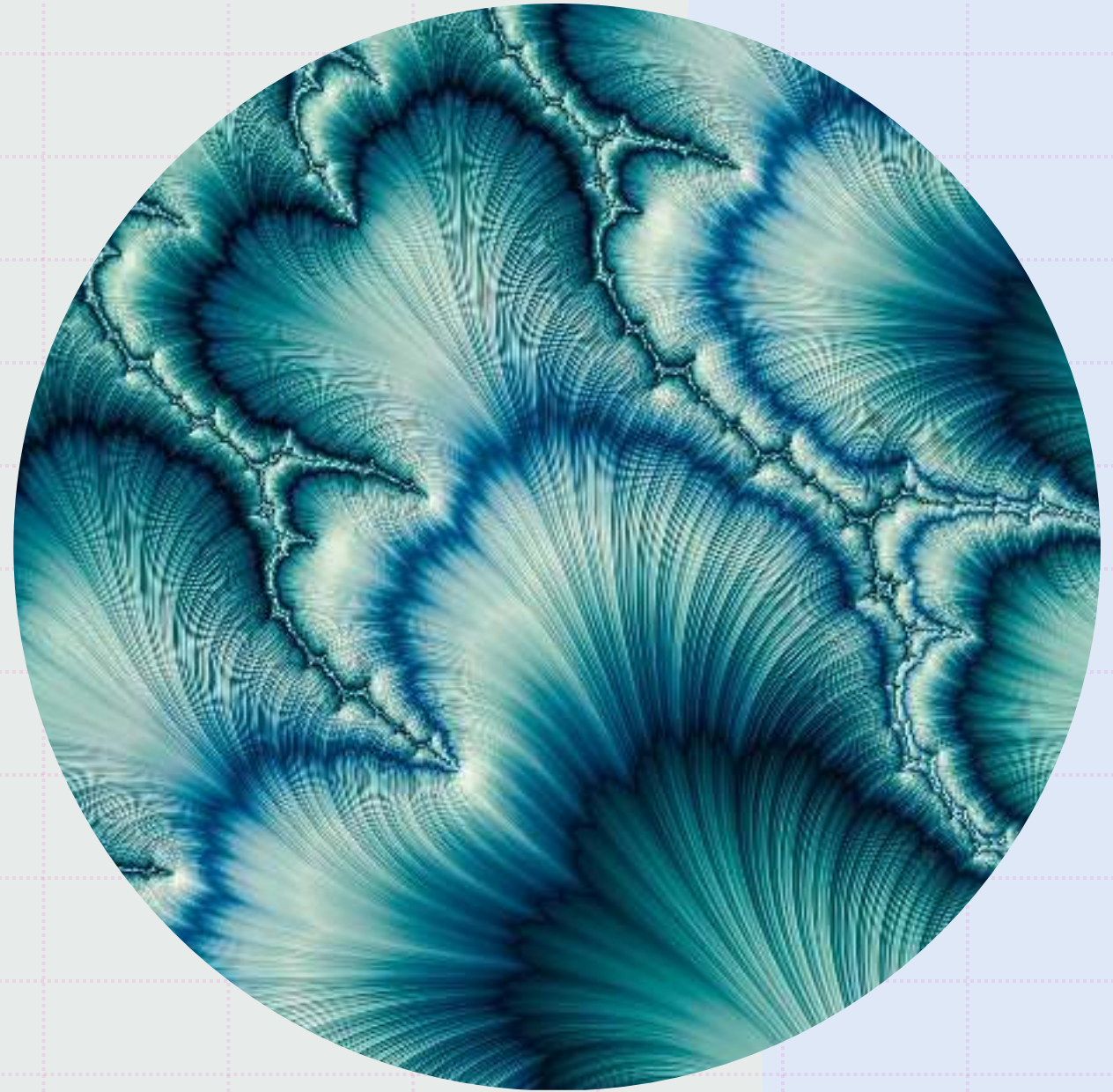
## 3. MULTIPLE CAUSES AND CONSEQUENCES OF WOMEN'S INVISIBILITY

---

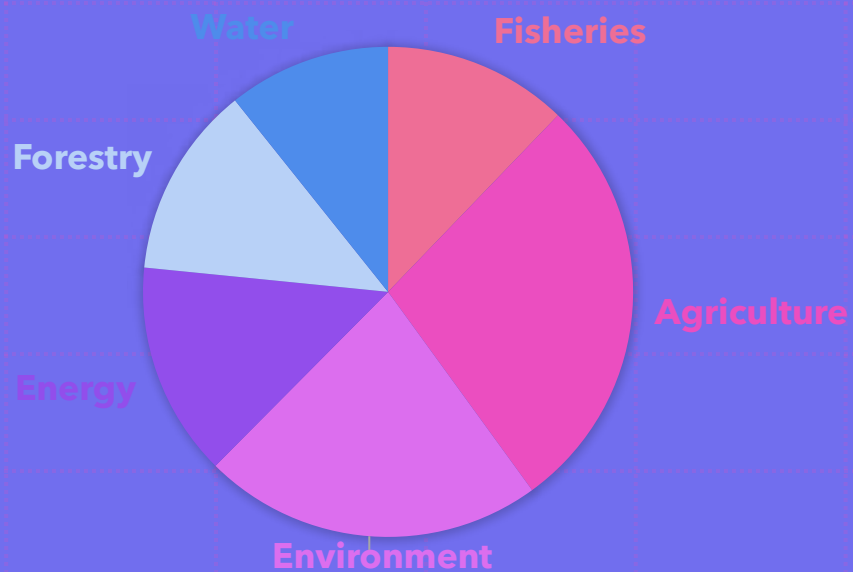


# Governance

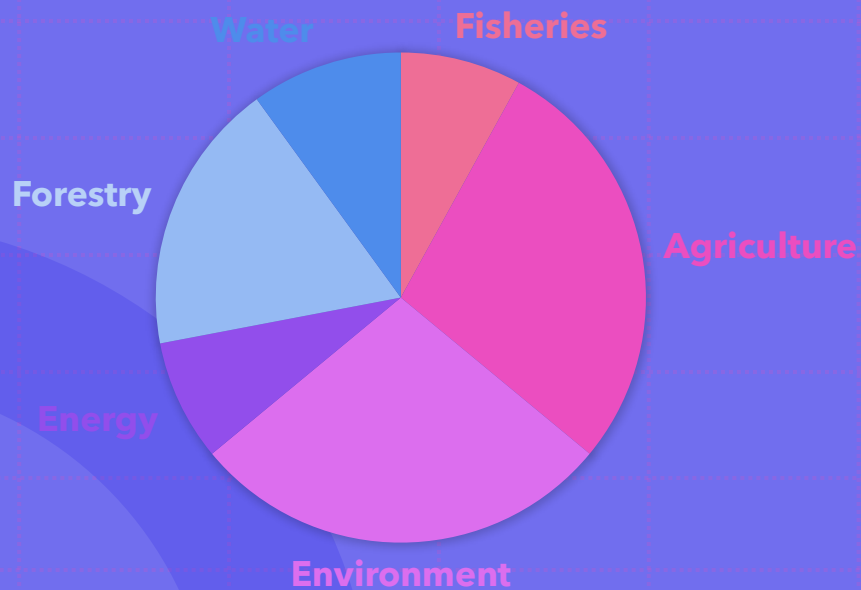
Technical and Social Science  
Collaboration in the Development  
Space



# GENDER FOCAL POINTS



# GENDER POLICIES



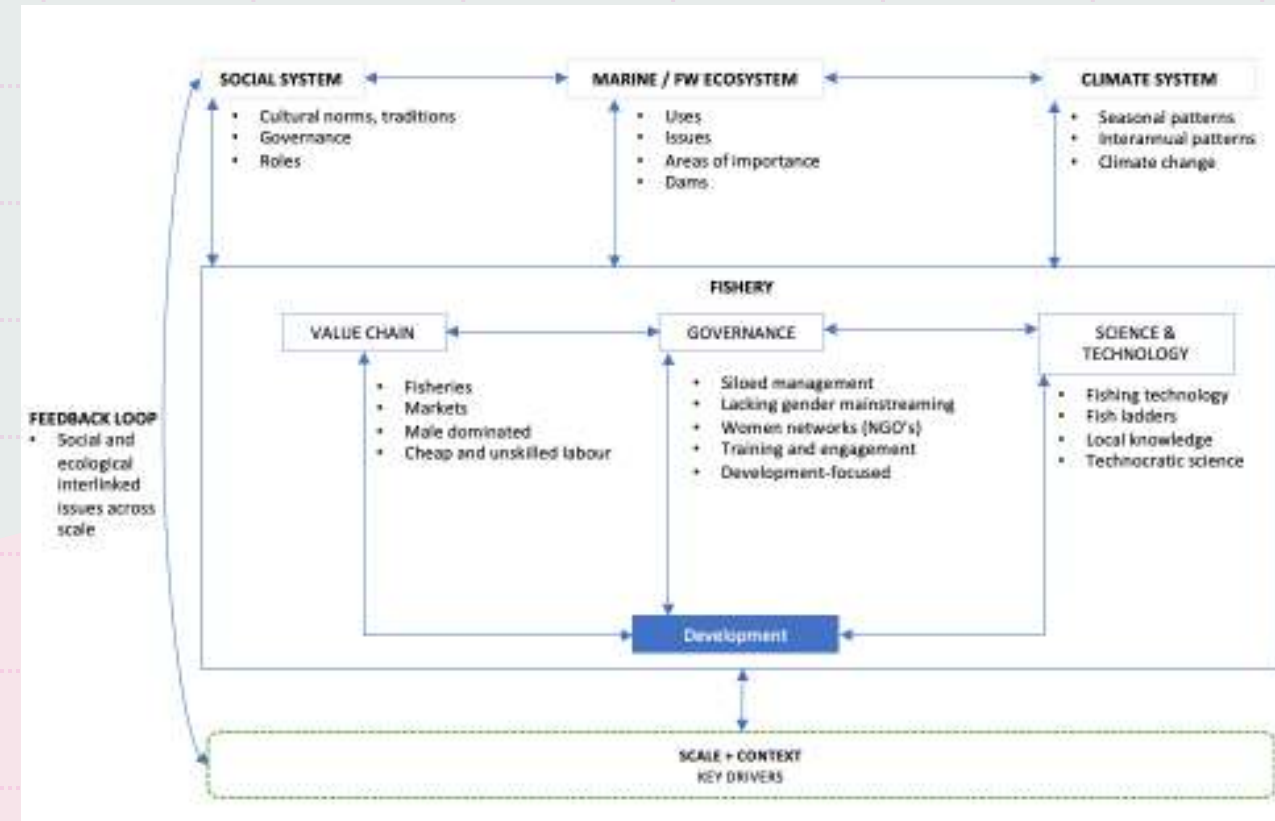
## Gender-Specific Indicators across the 17 sustainable development goals



Source: UN Women: Turning Promises into Action: Gender Equality in the 2030 Agenda for Sustainable Development, 2018

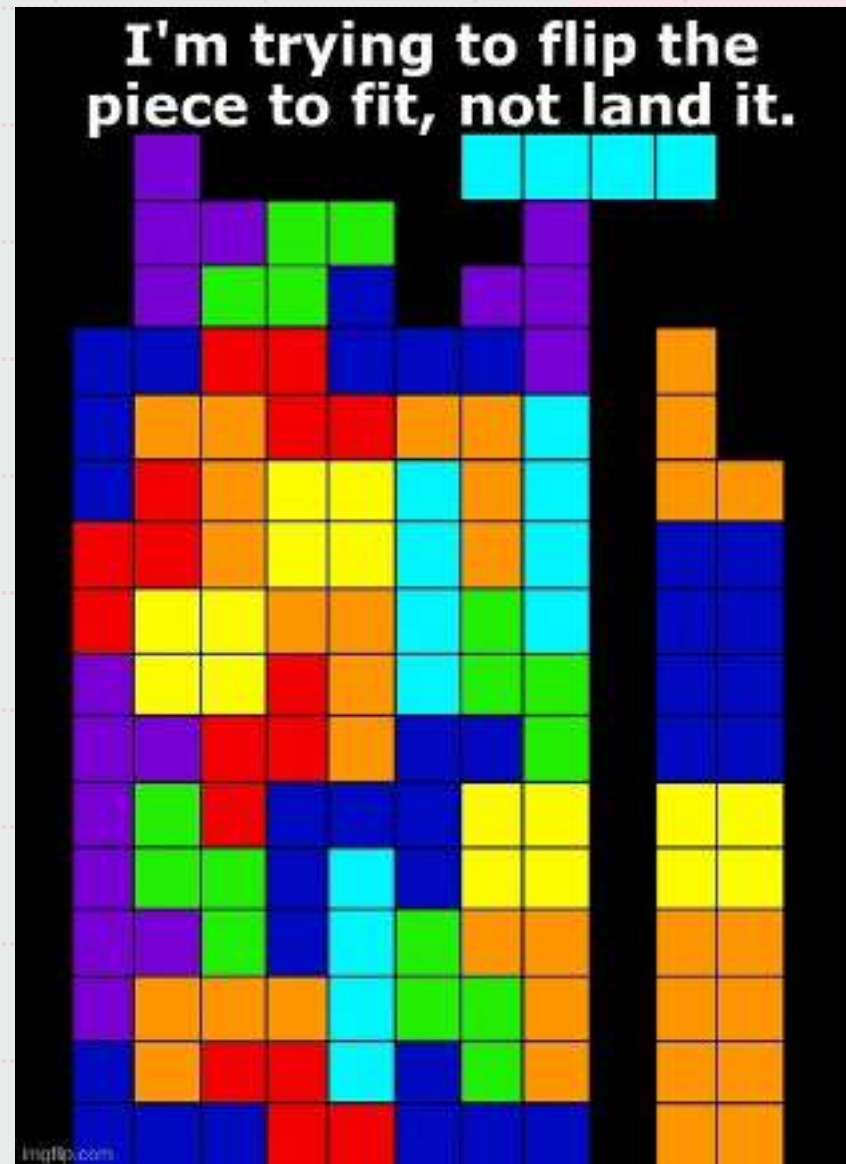
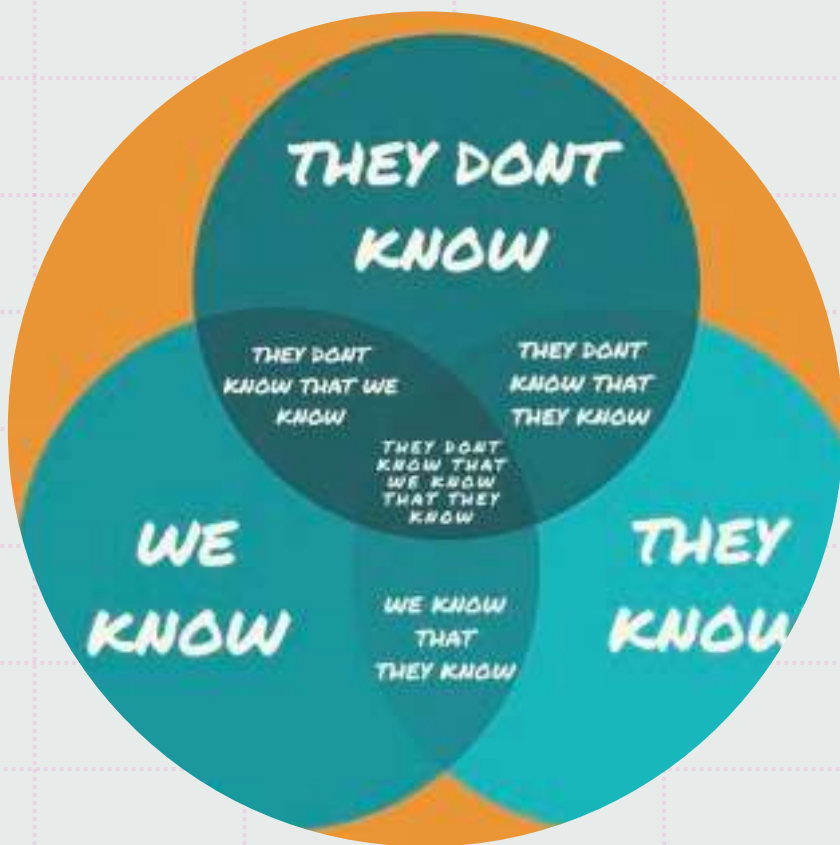


# Ensuring GEDSI outcomes off technical solutions to fisheries...



“The only thing I know is that I know nothing, and I am not quite sure that I know that”

• Socrates





...development donors and implementers are under **pressure to demonstrate success**, something they can do by suggesting direct causal relations between interventions and positive outcomes for women or gender equity.

The **dynamics of power and politics** that characterise feminist transformations are **difficult** to capture in causalities and outcomes, as these refer to processes of **struggle** and contestation in which winners and losers are **not always easily determined**, with cause-effect relations that are less straightforward and **multi-dimensional**.

- Resurrección & Elmhirst (2021) Ch.6 Margreet Zwarteveen

The GEDSI – Water – Fisheries Nexus

# Integrating GEDSI into FishTech

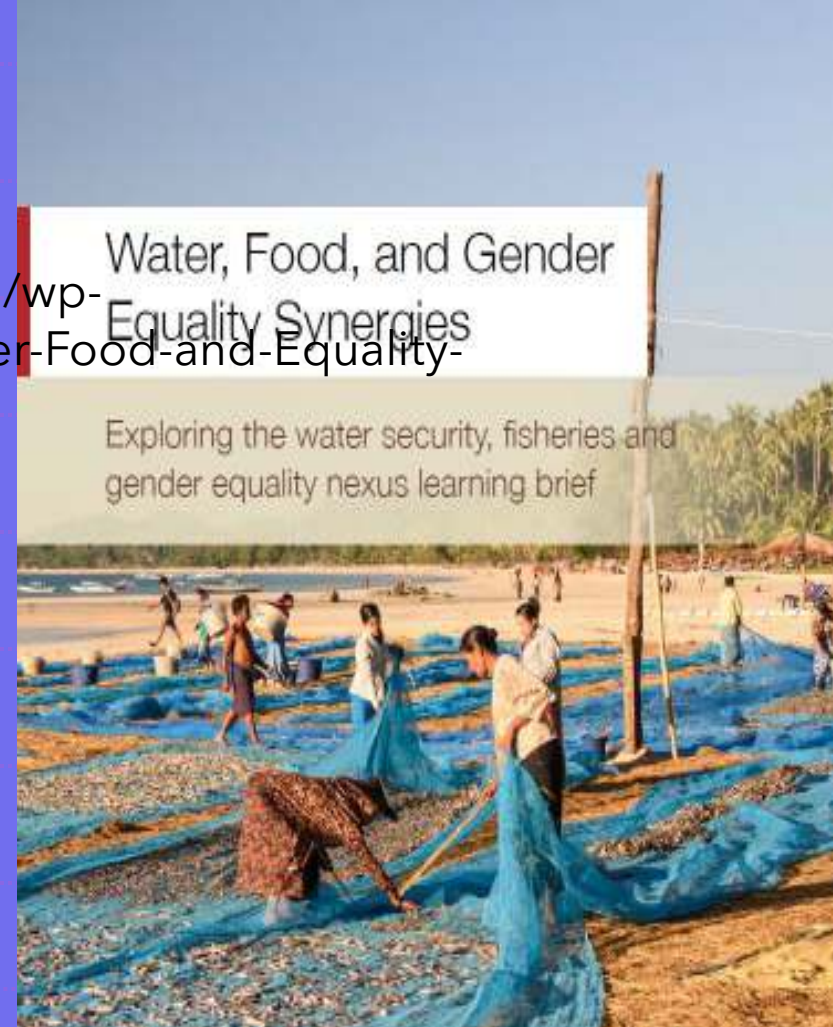




# Gender – water – fisheries nexus



<https://waterpartnership.org.au/wp-content/uploads/2024/03/Water-Food-and-Equality-Synergies-1.pdf>



Syddall, V., and Grant, M. (2023)  
<https://waterpartnership.org.au/wp-content/uploads/2024/03/Water-Food-and-Equality-Synergies-1.pdf>





Working Everyday Towards Transformative Outcomes

# **Lessons Learned for river development projects**



# Principles Guiding the Transformation of Fisheries



Benefits of inclusion



Women's roles valued



Address root of issues



Do no harm



Include marginalised voices



Context



Multi-scalar governance



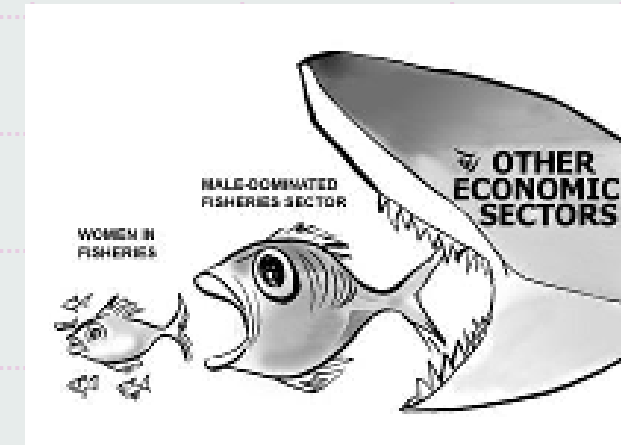
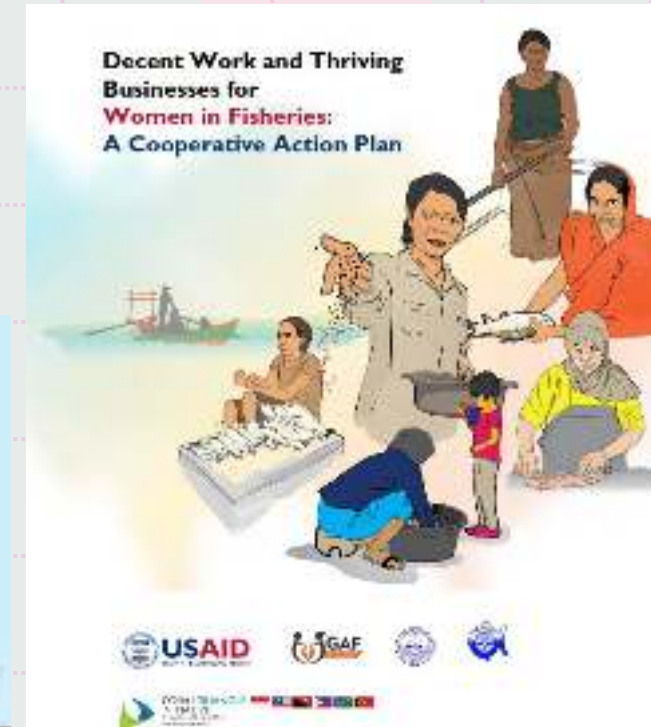
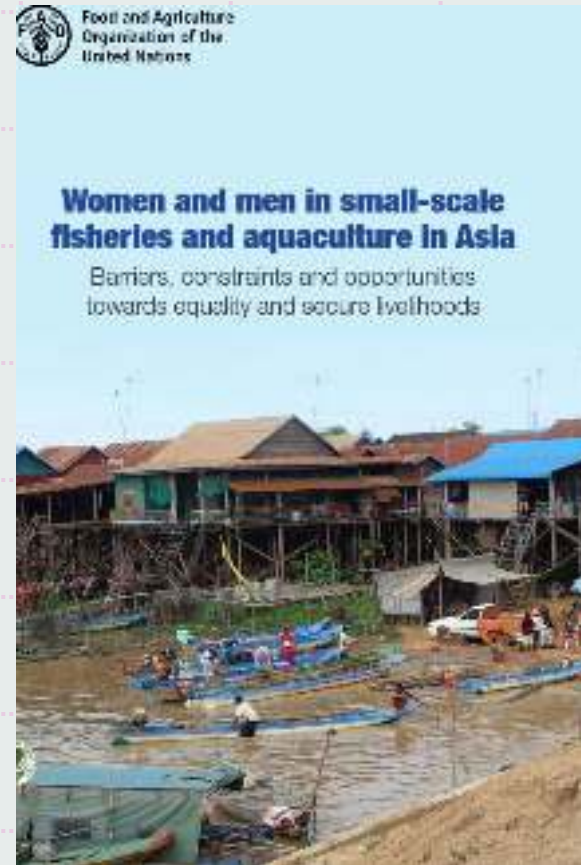
Resourcing

# Three things you can do!

Include women, disabled and socially excluded individuals or groups

Value their work

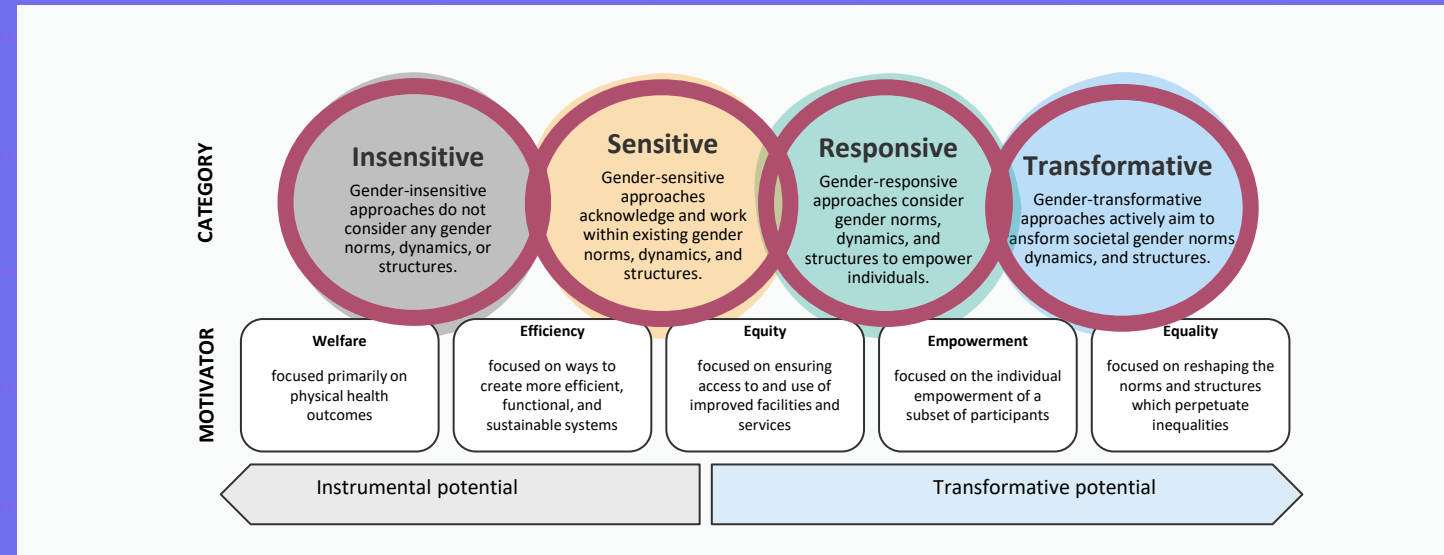
Empower women to become politically strong



Cartoon courtesy ICSF, 2008,  
Yemaya No. 28



# From insensitive, to transformative



Adapted from MacArthur et al. 2023 Gender equality approaches in water, sanitation, and hygiene programs: Towards gender-transformative practice, *Frontiers in Public Health*



An aerial photograph showing a winding river or canal cutting through a vast, dense green forest. The river flows from the top center towards the bottom center, with several meanders. The forest is thick and covers the entire landscape surrounding the water. The text "Thank you!" is overlaid in white, centered horizontally and slightly above the middle vertically.

Thank you!