

CSU PORT MACQUARIE STAGE 2B



JUNE 2019



SCHEDULE OF AREAS

STAGE 2A & 2B BRIEF	M ² (UFA)
INTERVIEW ROOM	18
DEMONSTRATION ROOM	32
BIOMECHANICS LAB	120
RESISTANCE GYM	130
EXERCISE PHYSIO LAB	140
IMAGING	30
NURSING SKILLS WARD	136
COMPUTOR LAB	70
NETWORK ENGINEERING LAB	70
LARGE FLAT FLOOR TEACHING	130
LARGE FLAT FLOOR TEACHING	130
LARGE FLAT FLOOR TEACHING	130
LARGE FLAT FLOOR TEACHING	130
LARGE FLAT FLOOR TEACHING	130
SMALL FLAT FLOOR TEACHING	80
SMALL FLAT FLOOR TEACHING	80
SMALL FLAT FLOOR TEACHING	80
SMALL FLAT FLOOR TEACHING	80
SMALL FLAT FLOOR TEACHING	80
SMALL FLAT FLOOR TEACHING	80
SMALL FLAT FLOOR TEACHING	80
TIERED CLASSROOMS	130
TIERED CLASSROOMS	130
BREAKOUT	100
SCIENCE LAB	200
STAFF ACCOMMODATION	1000
TOTAL	3306

STAGE 2B (2018 - incl NURSING)	M ² (UFA)
INTERVIEW ROOM	
DEMONSTRATION ROOM	
BIOMECHANICS LAB	120
RESISTANCE GYM	130
EXERCISE PHYSIO LAB	140
IMAGING	
NURSING SKILLS WARD	
COMPUTOR LAB	70
NETWORK ENGINEERING LAB	
LARGE FLAT FLOOR TEACHING	
LARGE FLAT FLOOR TEACHING	
LARGE FLAT FLOOR TEACHING	130
LARGE FLAT FLOOR TEACHING	130
SMALL FLAT FLOOR TEACHING	
SMALL FLAT FLOOR TEACHING	
SMALL FLAT FLOOR TEACHING	
SMALL FLAT FLOOR TEACHING	
SMALL FLAT FLOOR TEACHING	80
SMALL FLAT FLOOR TEACHING	80
SMALL FLAT FLOOR TEACHING	80
TIERED CLASSROOMS	
TIERED CLASSROOMS	
TIERED CLASSROOMS	
BREAKOUT	
SCIENCE LAB	200
STAFF ACCOMMODATION	
TOTAL REMAINING	1160

STAGE 2B BRIEF DEVELOPED	M ² (UFA)
BIOMECHANICS LAB	120
RESISTANCE GYM	130
EXERCISE PHYSIO LAB	140
COMPUTOR LAB	70
LARGE FLAT FLOOR TEACHING	130
LARGE FLAT FLOOR TEACHING	130
SMALL FLAT FLOOR TEACHING	80
SMALL FLAT FLOOR TEACHING	80
SMALL FLAT FLOOR TEACHING	80
SCIENCE LAB	200
ADDITIONAL AREAS	
BREAKOUT	100
EMERGENCY SERVICES	130
EMERGENCY SERVICES	130
STAFF ACCOMMODATION	450
INNOVATION HUB	200
TOTAL	2170
EQUALS	2820 GFA
BUDGET AREA	1650 GFA

FINAL AREA	M ² (UFA)
LARGE FLAT FLOOR TEACHING	130
LARGE FLAT FLOOR TEACHING	130
SMALL FLAT FLOOR TEACHING	80
SMALL FLAT FLOOR TEACHING	80
SMALL FLAT FLOOR TEACHING	80
BREAKOUT	100
EMERGENCY SERVICES (SHARED)	
EMERGENCY SERVICES (SHARED)	
STAFF ACCOMMODATION	450
INNOVATION HUB	400
1.3 % GROSSING FACTOR	380
TOTAL	1830 GFA

STAGE 2B
OPTION C - SOUTH



STAGE 2B
OPTION B
EAST



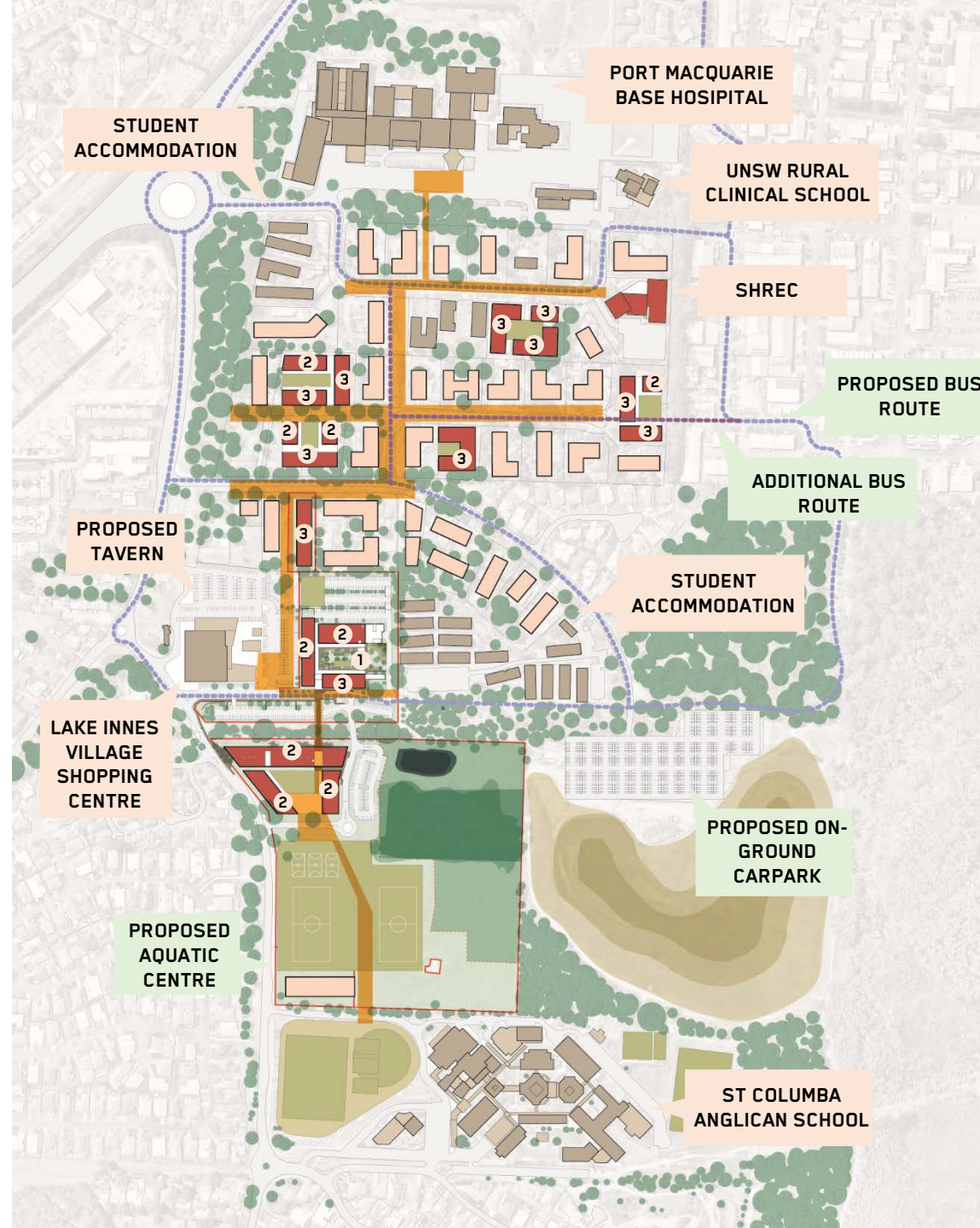
STAGE 2B
OPTION A
WEST



MASTERPLAN



PRECINCT MASTERPLAN & CSU INTEGRATED CAMPUS



PARKING

CARPARKING

CARPARK LOCATION OPTIONS:

1 OPTION 1

- 100 additional parking spaces required for Stage 2B
- in Asset Protection Zone, in line with Masterplan
- extension to Stage 2A carpark

2 OPTION 2

- 100 parking spaces required for Stage 2B in conflict with masterplan - in place of areas set aside for future buildings, if intention for future southern development to occur.
- In addition, a large carpark could impact future sale of land to the south if a masterplan focussed on future northern development were to proceed in line with Health Precinct Masterplan.

3 OPTION 3

- permanent carpark
- 100 parking spaces required for Stage 2B in Asset Protection Zone, in line with masterplan

LEGEND:

- - - - - SITE BOUNDARY
- - - - - 27 m BUFFER MARKING
- - - - - EXTENT OF BUSHFIRE ASSET PROTECTION ZONE
- - - - - TEMPORARY LANDFILL GAS BUFFER 200 m FROM TOE OF LANDFILL
- - - - - LEP FLOOD PLANNING AREA
- - - - - LEP LEVEL OF PROBABLE MAXIMUM FLOOD
- - - - - MAPPED WATERCOURSES
- - - - - EXTENT OF MAPPED COASTAL WETLANDS
- - - - - VEGETATION MANAGEMENT PLAN OFFSET AREA (REFER TO SLR REPORT)
- - - - - SURVEYED VEGETATION AREA
- HOLLOW BEARING TREES TO BE RETAINED



2B BUILDING

SITE PLAN

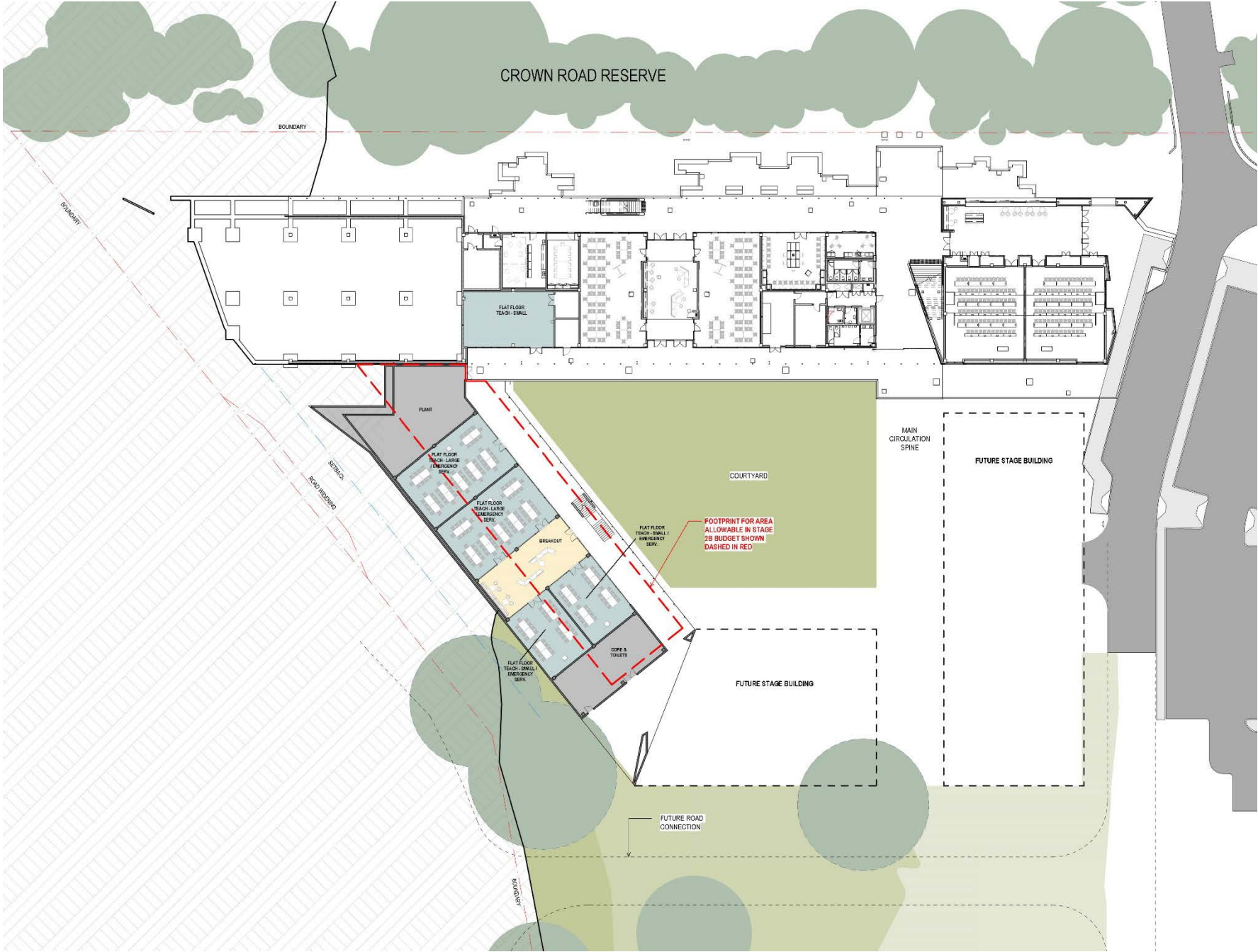


- LEGEND:**
- - - SITE BOUNDARY
 - - - 37m BUFFER MARKING
 - - - EXTENT OF SUBMERGED PROTECTION ZONE
 - - - TEMPORARY LANDFILL GAS BUFFER 12m FROM TOE OF LANDFILL
 - - - LEP FLOOD PLANNING AREA
 - - - LEP LEVEL OF PROBABLE MAXIMUM FLOOD
 - - - MAPPED WATER COURSES
 - - - EXTENT OF MAPPED COASTAL WETLANDS
 - - - VEGETATION MANAGEMENT PLAN OFFSET AREA (REFER TO SLR REPORT)
 - - - SURVIVED VEGETATION AREA
 - HOLLOW BEARING TREES TO BE RETAINED

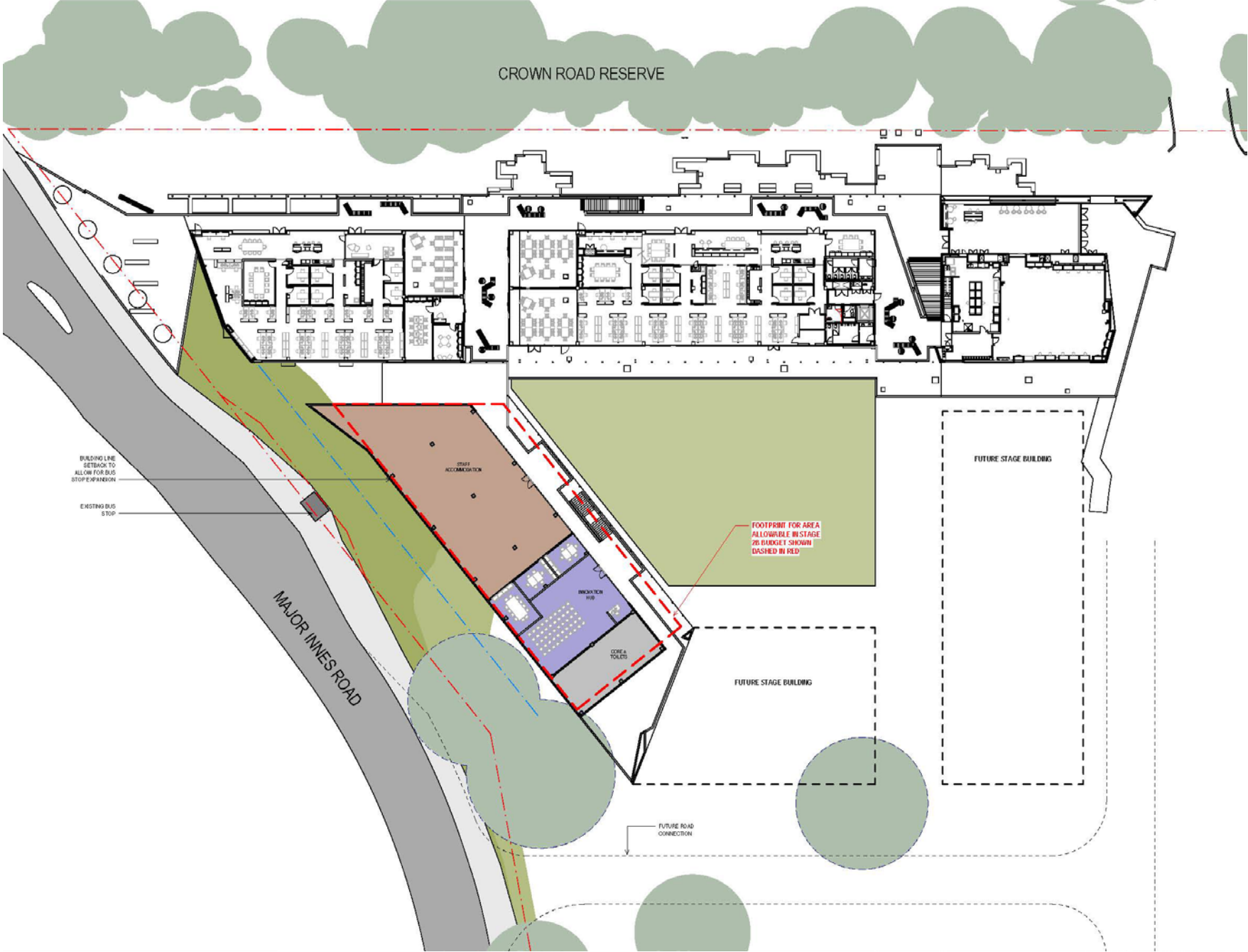
STAGE 2B



STAGE 2B
Level 1



STAGE 2B
Level 2



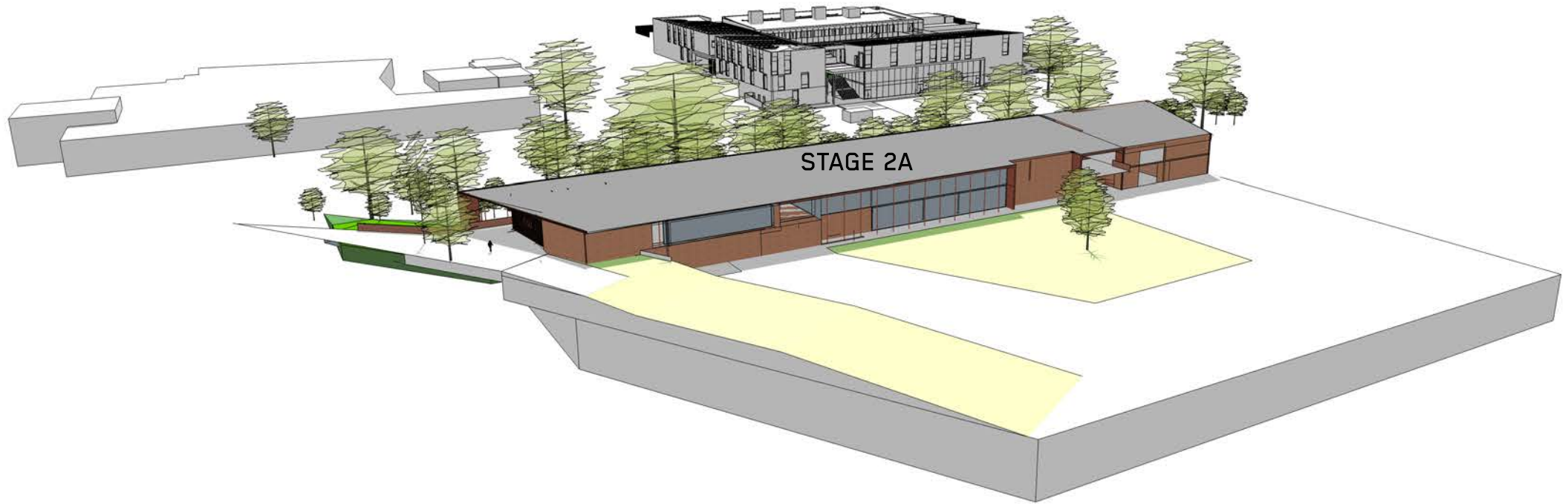


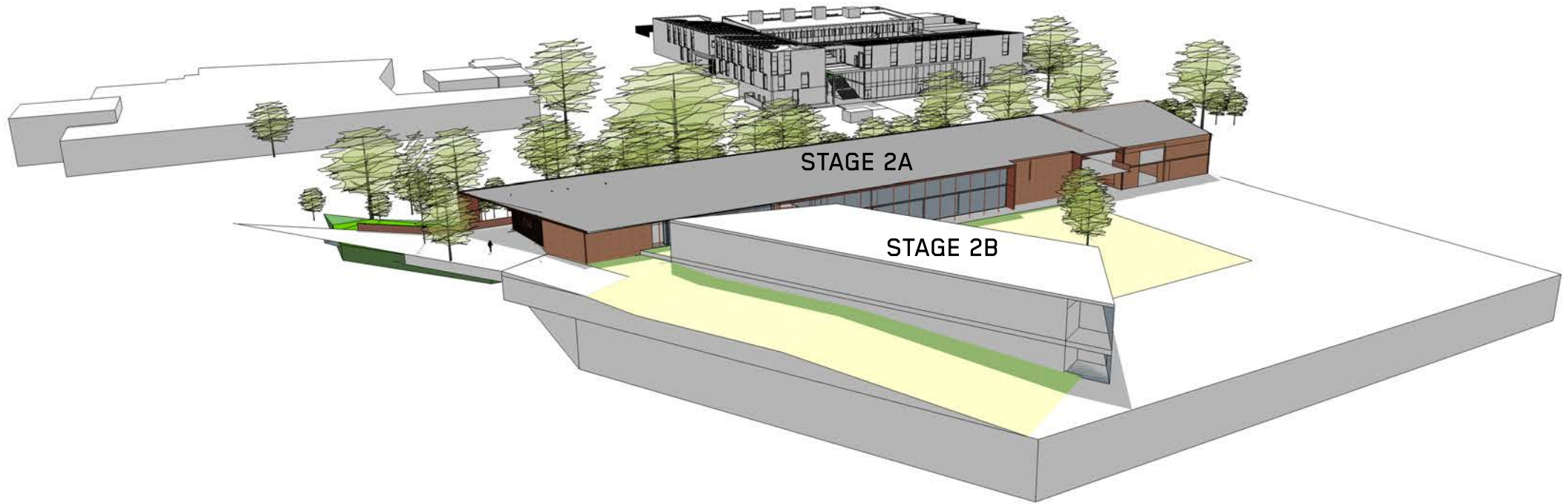


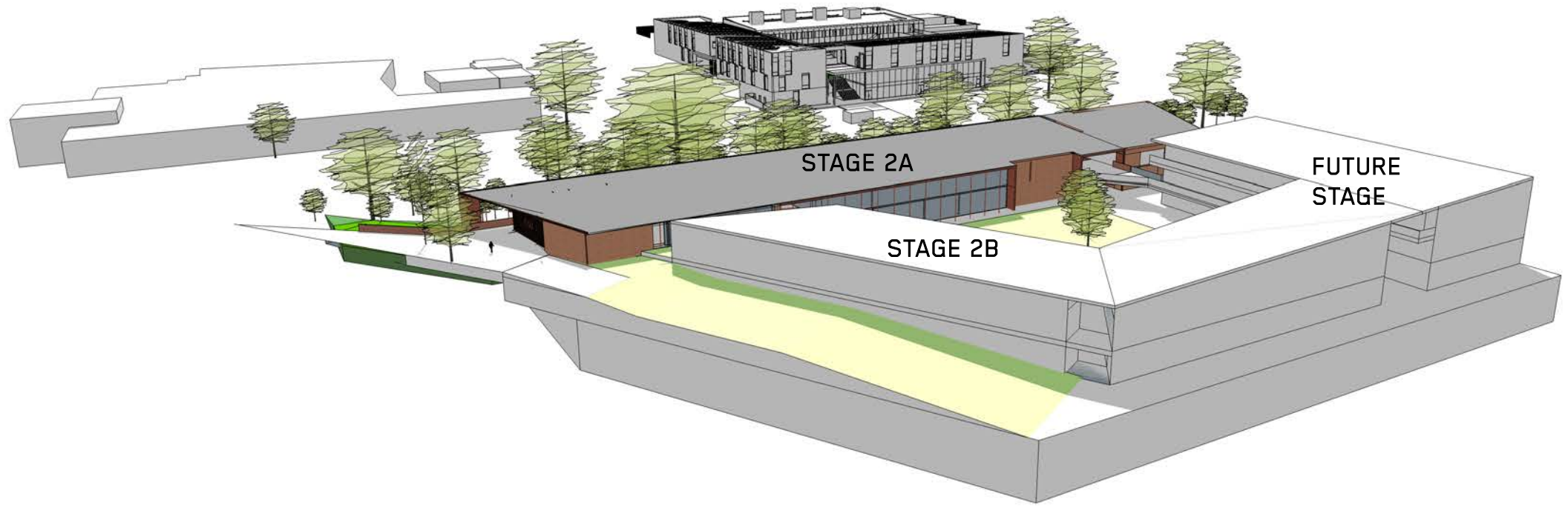
CSU







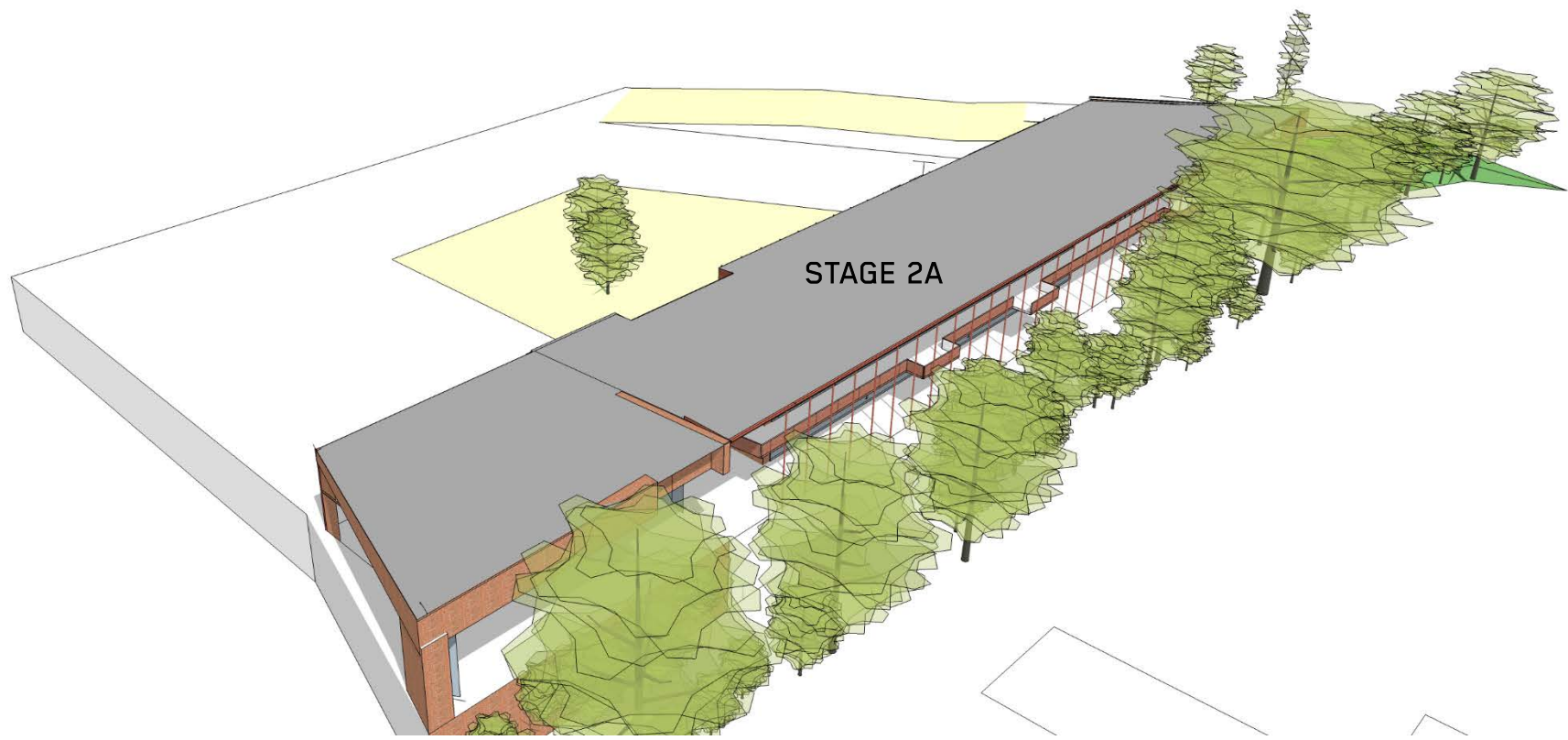


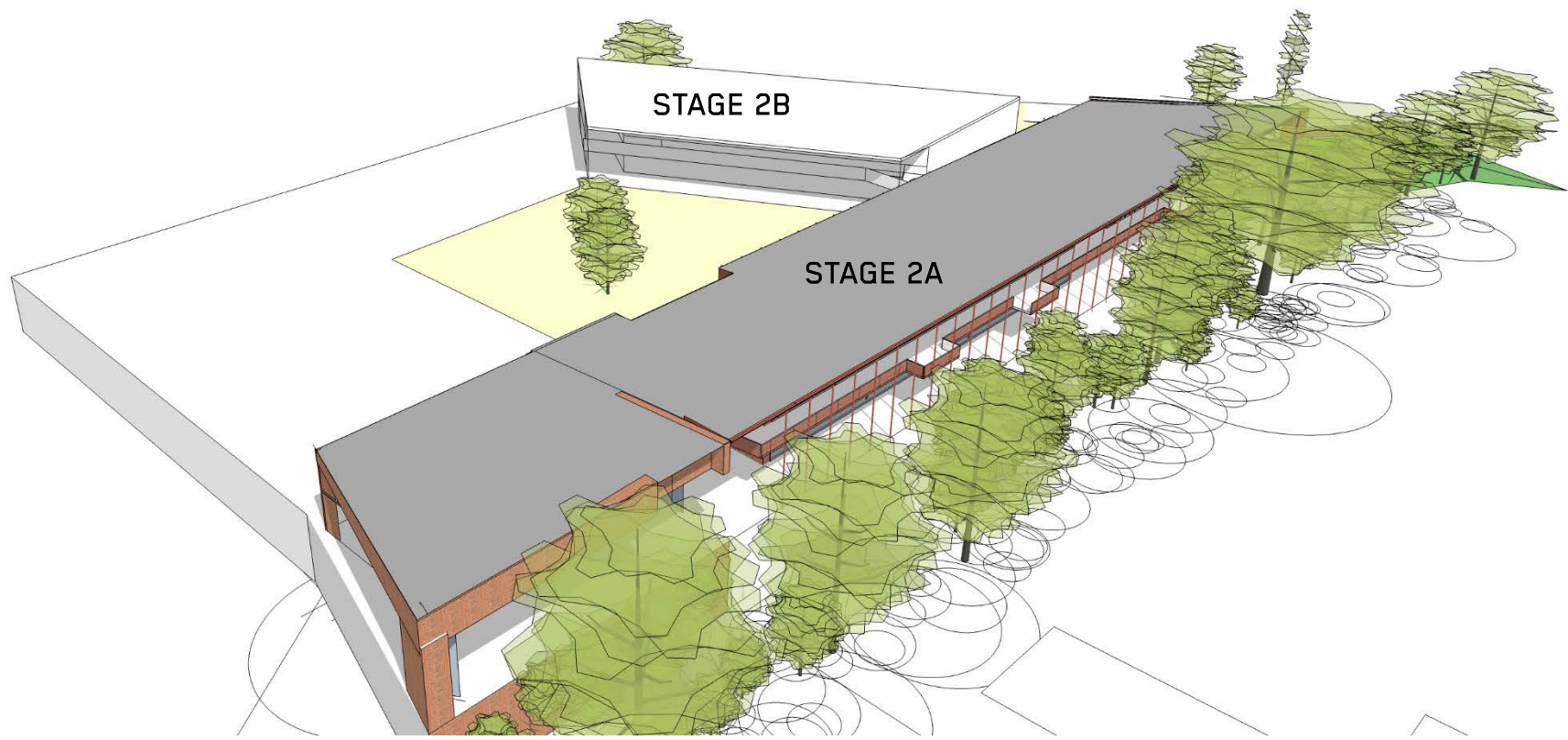


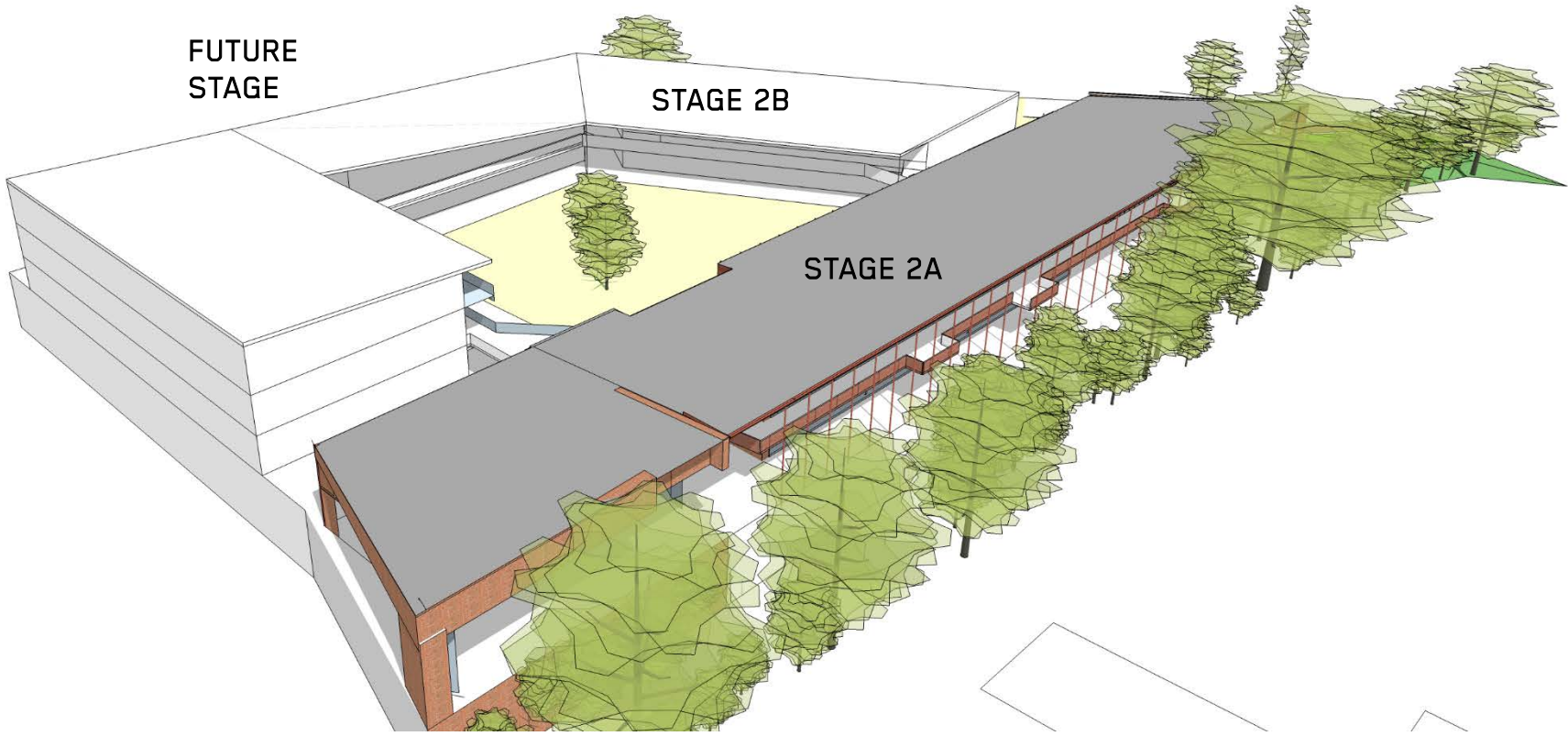


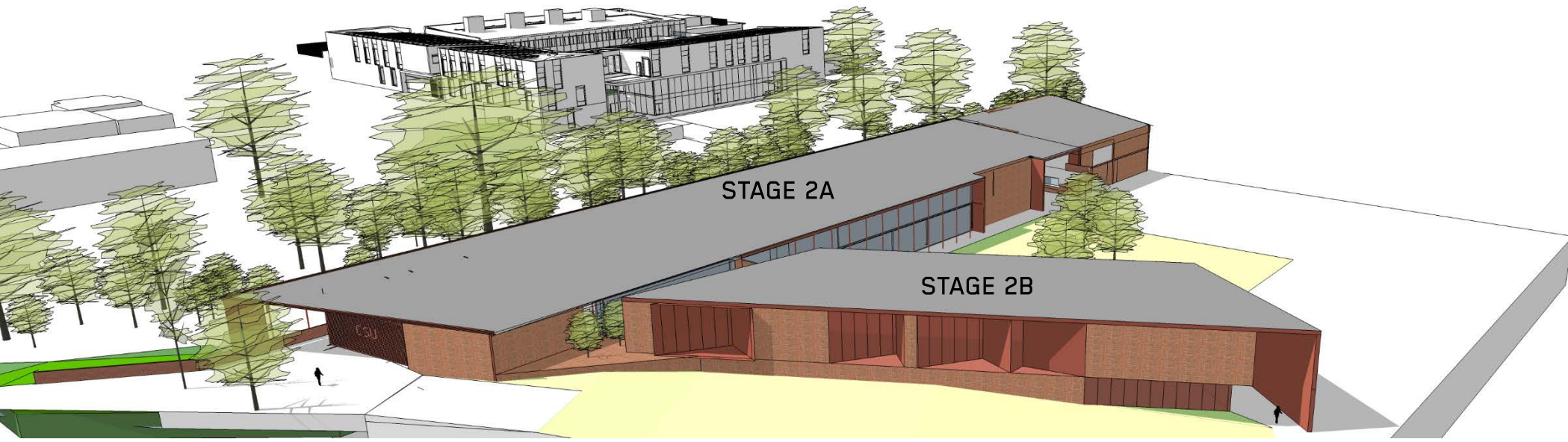


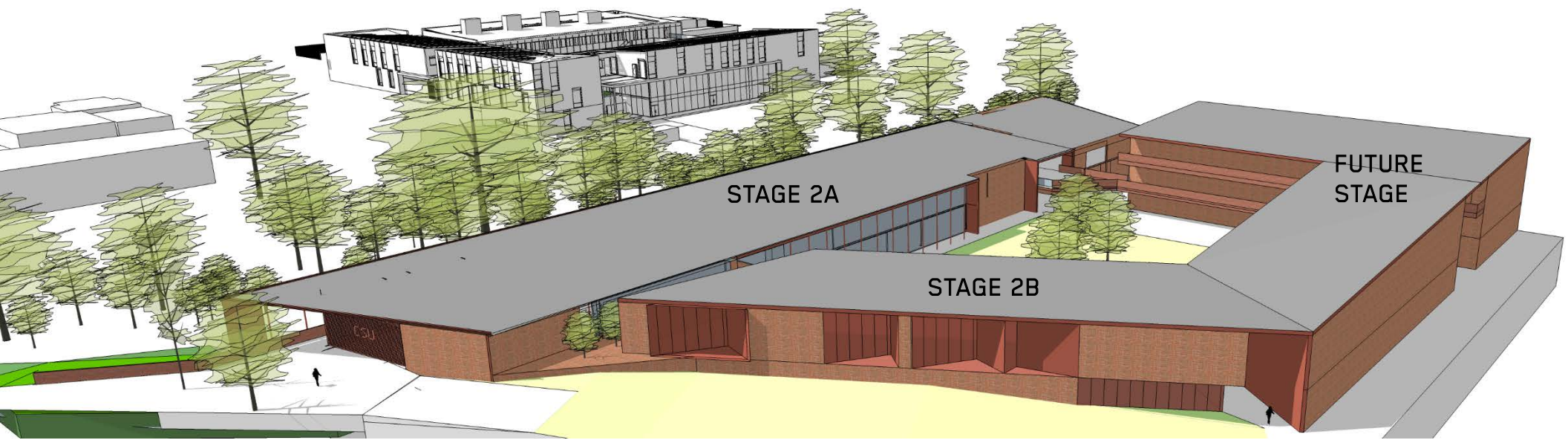






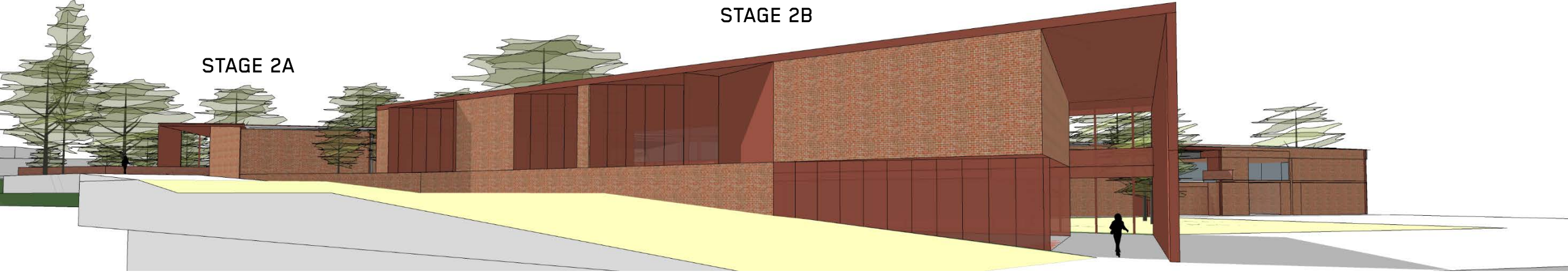


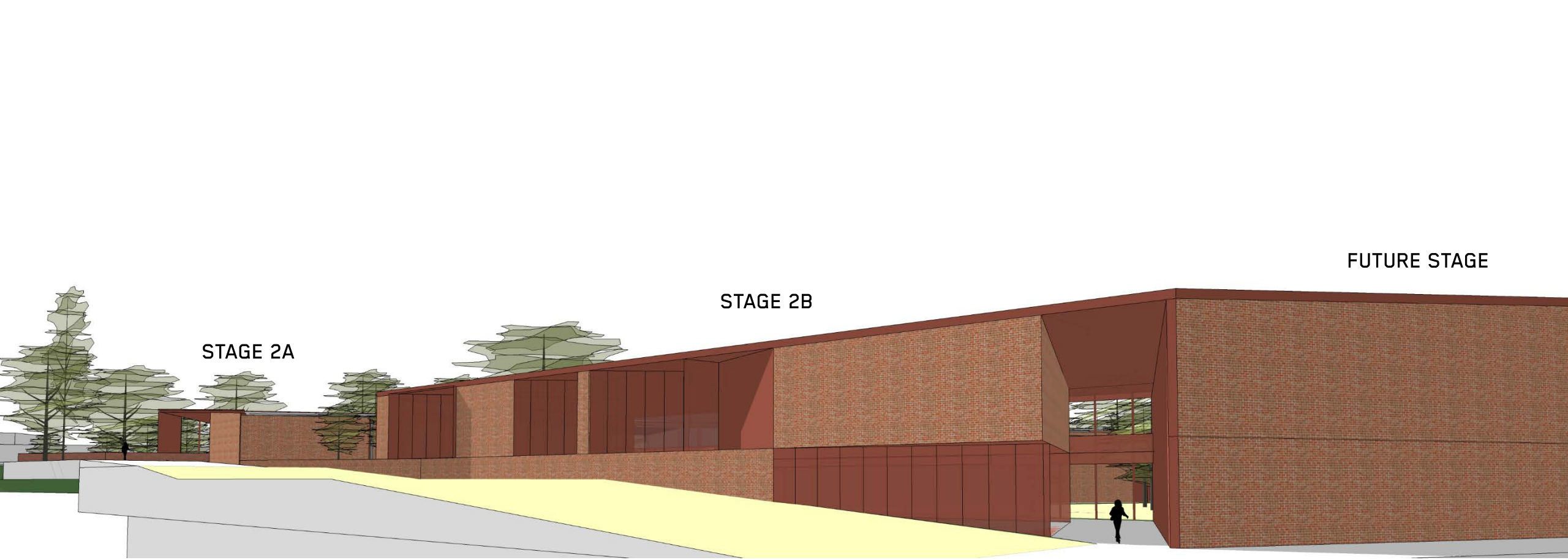




STAGE 2A

STAGE 2B





STAGE 2A

STAGE 2B

FUTURE STAGE



STAGE 2A

STAGE 2B



STAGE 2A

STAGE 2B





STAGE 2A

STAGE 2B