



You are invited to the 2015 Cropping and Pasture Systems Field Forum

Wednesday, 2 September 2015

9am – 3pm (8.30am for 9am start)

Convention Centre

Charles Sturt University, Wagga Wagga



Detailed notes of all trials can be downloaded at:
www.csu.edu.au/research/grahamcentre/field-site

www.grahamcentre.net

Demonstrations and displays

Conservation cropping

The Graham Centre Field Site has been the Wagga Wagga location for three multi-year experiments that have been sown at several places to examine similarities and differences between sites:

1. **cropping sequences:** this trial finished in 2014 and the plots are now under a uniform treatment. Results of the benefits of nitrogen from break crops, hay and brown manure crops to yield and quality of subsequent wheat crops will be published on the Graham Centre website
2. **evercrop pasture mix:** plots are under a uniform crop in 2015 to examine the effects of various pasture treatments from the last four years on subsequent crops
3. **legumes for the high rainfall zones:** the trial has been sown to a uniform crop in 2015 to examine the effects of the legume crops and pastures that were grown in 2014
4. **soil pit:** here the various soil layers can be seen. The red earth layer, about 80cm deep, overlays a denser layer that limits root growth and potentially limits crop yield.

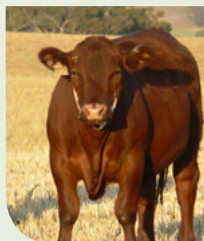


Weed and disease management

- the use of competitive crop varieties and row spacing to suppress weeds
- a new five-year trial looking at weed dynamics in the rotation
- the competitive ability of a range of canola varieties to suppress weeds
- canola variety groupings for Blackleg resistance.

Integrating natural areas

- creating a farm wetland
- native plants
- refuges for beneficial insects.





Integrating crop and livestock production

About the site

Now in its sixth year, the Graham Centre Field Site encourages growers, researchers, students and advisers to exchange ideas on improving agricultural production and profitability. It showcases new research findings and technology, completed projects and ongoing demonstrations with practical applications.

The Wagga Wagga community, local schools, producers and researchers are encouraged to participate in the development of the site, to elevate the profile of agriculture to the broader Australian community.



Forum program



8.30am	Registration and coffee
9.00am	Welcome and Overview of Graham Centre Field Site Professor Michael Friend , Director, Graham Centre
9.15am	Evercrop Graeme Sandral and Richard Hayes
9.40am	Crop Sequences Dr Guangdi Li
10.05am	Stubble management Dr Iain Hume
10.30am	MORNING TEA
11.00am	Native plant nursery Dr Phil Bowden
11.20am	Legumes for High Rainfall Zones Dr Mark Norton
11.35am	Weeds Professor Leslie Weston and Dr William Brown
12.00pm	Plant Diseases Dr Kurt Lindbeck
12.20pm	Evaluation of Field Site Professor Michael Friend
1.00pm	LUNCH
1.45pm	Travel to Field Site
2.00pm	Field Site tour <ul style="list-style-type: none">• weed dynamics and suppression trials• evercrop final year• blackleg of canola• soil pit
3.00pm	Close

Cropping and Pasture Systems Field Forum

RSVP: Wednesday 26 August to
cpsff@csu.edu.au or call:

Toni Nugent

02 6933 4402 | 0418 974 775

www.grahamcentre.net

An alliance between:



Department of
Primary Industries