



Department of
Primary Industries



RURAL INDUSTRIES
Research & Development Corporation



The Rice Food Experts

The Australian Rice Breeding Program: where quality meets quantity

Dr Ben Ovenden, Dr Peter Snell and Dr Jixun Luo

Australian Rice Partnership II project

Australian Rice Quality Symposium, Wednesday 19 July 2017

CSU Wagga Wagga

Aim: Create value and sustainability for rice growers

$$\textit{Total Return} = \textit{Amount} \times \textit{Price}$$

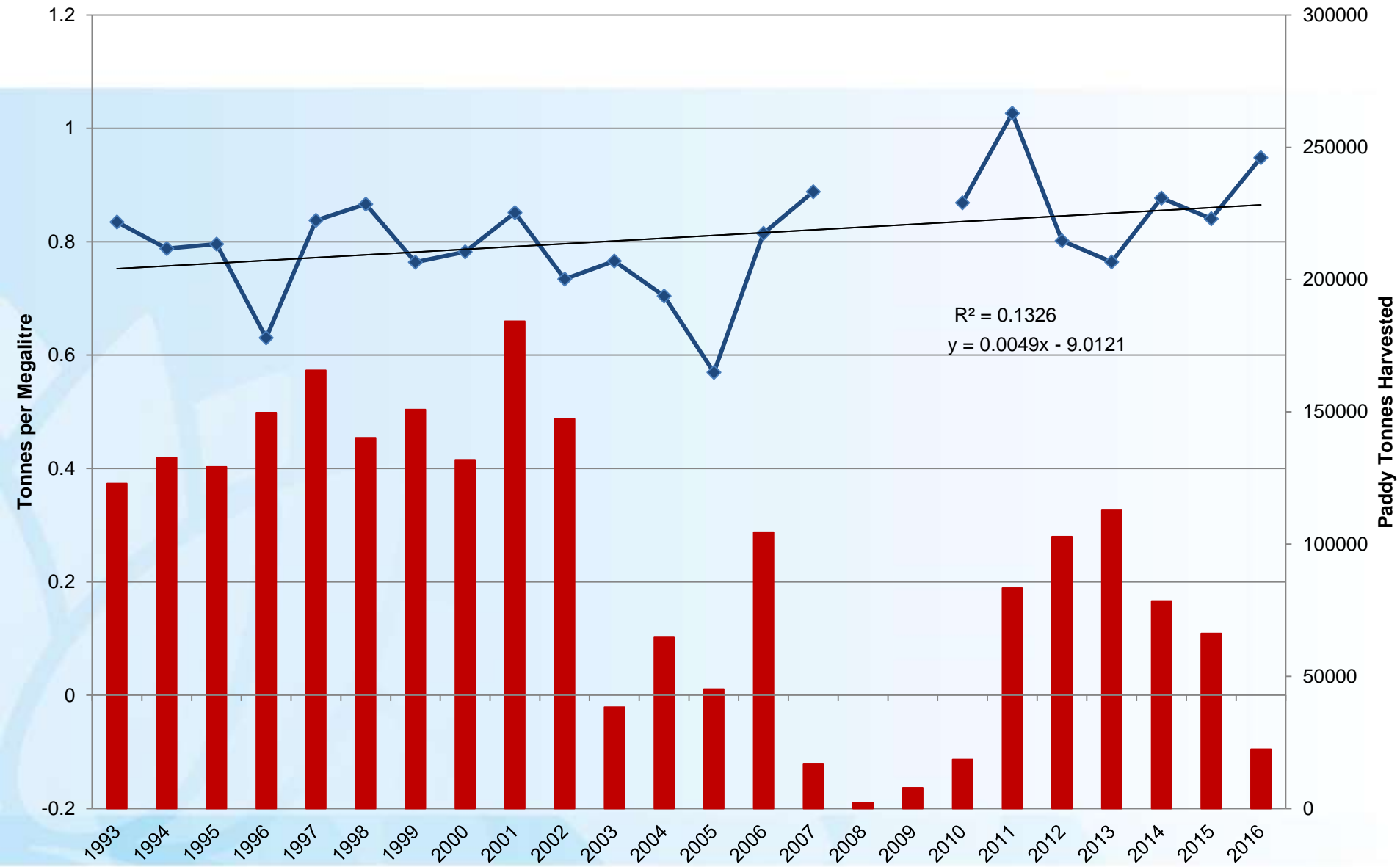
$$\textit{Amount} = \frac{\textit{Grain Yield}}{\textit{most limiting resource}}$$

 **Water, WUE**

$$\textit{Price} = \textit{category} \times \textit{grade in category}$$

Quality

Estimated Weighted Average Tonnes per Megalitre for 1993 - 2016 Crop Years



Water Use Efficiency

Target of 1.5t/ML for the whole rice industry:

- 0.5% per year (current rate) = 2099
- 1.0% (double current rate) = 2058
- 1.5% (triple current rate) = 2045
- 3.0% (6x current rate) = 2031



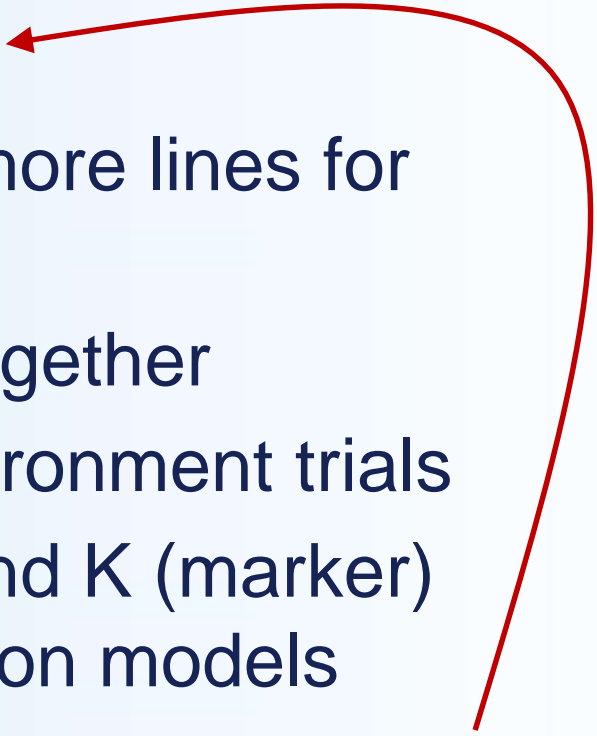
Rice Breeding 2.0

- Focus on performance under reduced irrigation
- Focus on high value quality types
- Focus on increasing rate of genetic gain:

$$\Delta G = \frac{i h \sigma_A}{L}$$

$$\text{Response} = \frac{\text{intensity} \times \text{accuracy} \times \text{genetic var}}{\text{generation time}}$$

Increasing *accuracy* and reducing *time*

- Markers “early and often”
 - Sparse phenotyping (test more lines for yield)
 - Analyse co-located trials together
 - Increased use of multi-environment trials
 - Incorporate A (pedigree) and K (marker) matrix into breeding selection models
 - K matrix = transition to genomic selection
- 

Increase *accuracy* and reduce *time* in rice quality (rice *price*) selection

1. New quality categories

- Low GI medium grain

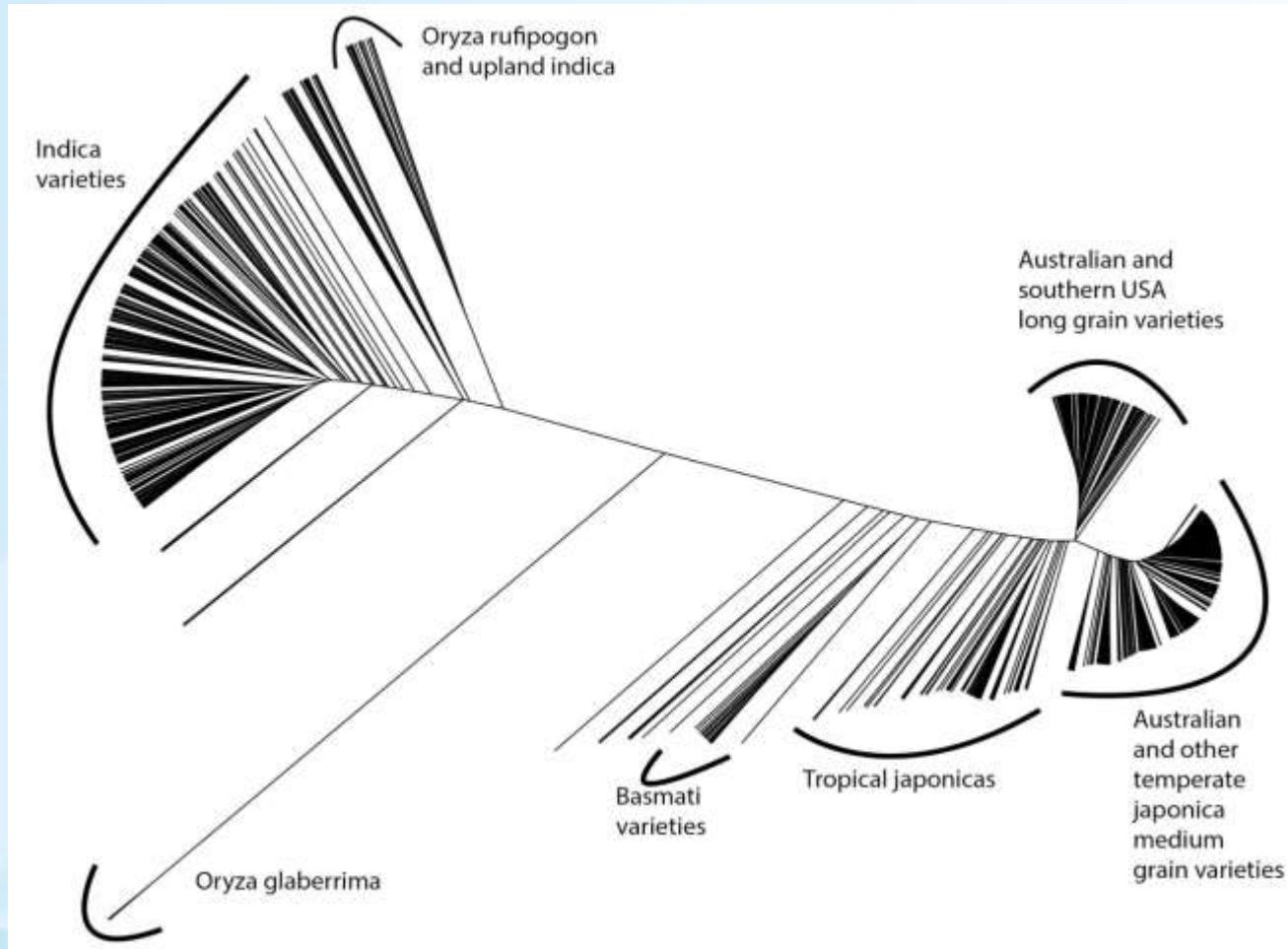
2. Better quality in existing categories

- Reduced cracking, chalk
- Optimal cooked rice texture, aroma

3. MAS enrichment of quality alleles

- So that breeding program germplasm screened for cold, aerobic performance already has essential combo of quality traits

Yanco Germplasm Collection





Mapping populations



- Yanco Core Set
 - 250 diverse japonica lines
 - Association Mapping / GWAS
 - 30,000 SNPs
- Baru x M205
- Teqing x Lemont
- Basmati 370 x Doongara
- Purple x Sherpa
- Reiziq x Kyeema
- Sherpa x Doongara
- ...