

Trading cattle

Too expensive to get in or too costly not to?

John Francis
Holmes Sackett

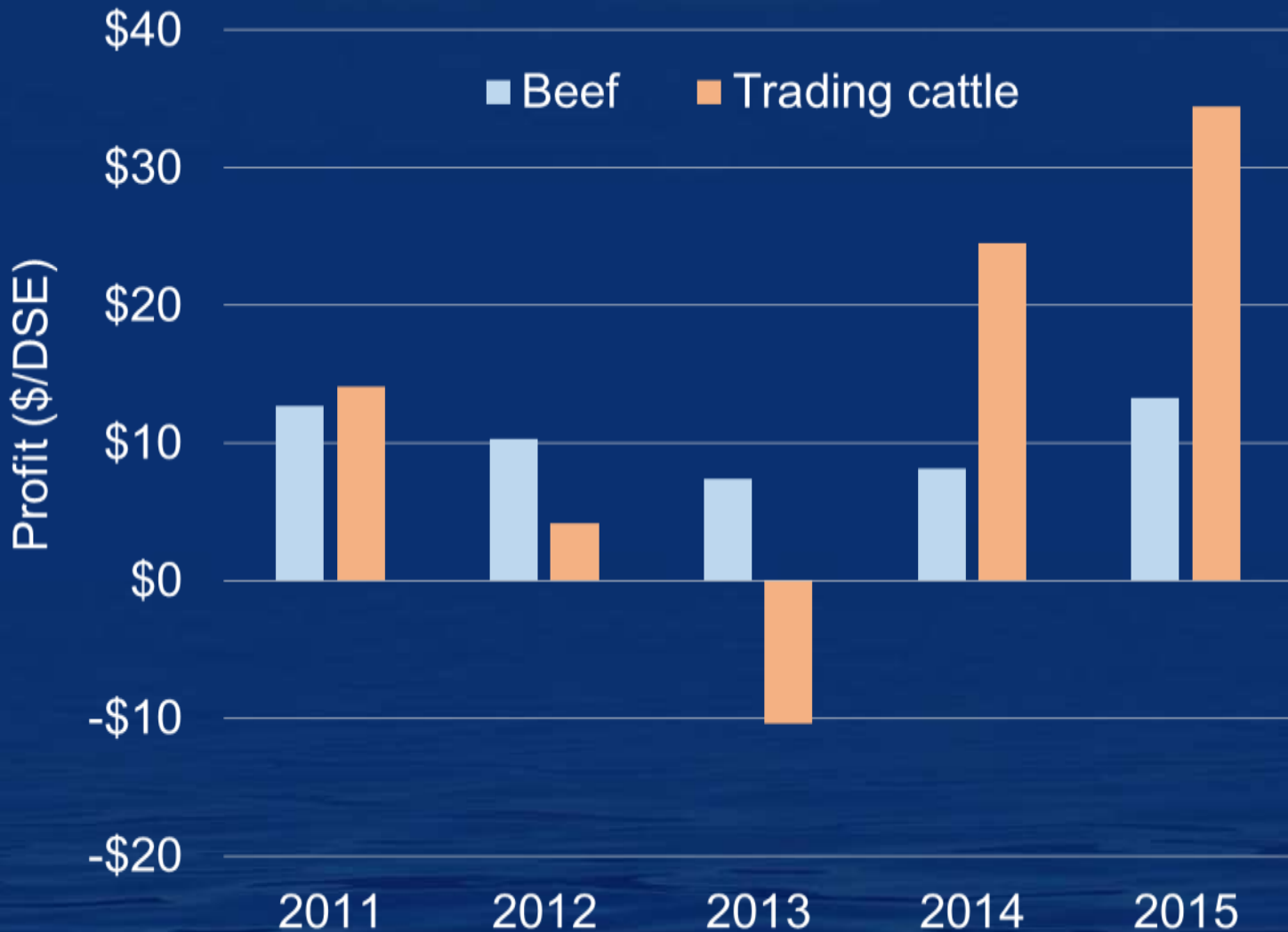
John@holmessackett.com.au

Holmes Sackett@holmessackett

0427 259 005

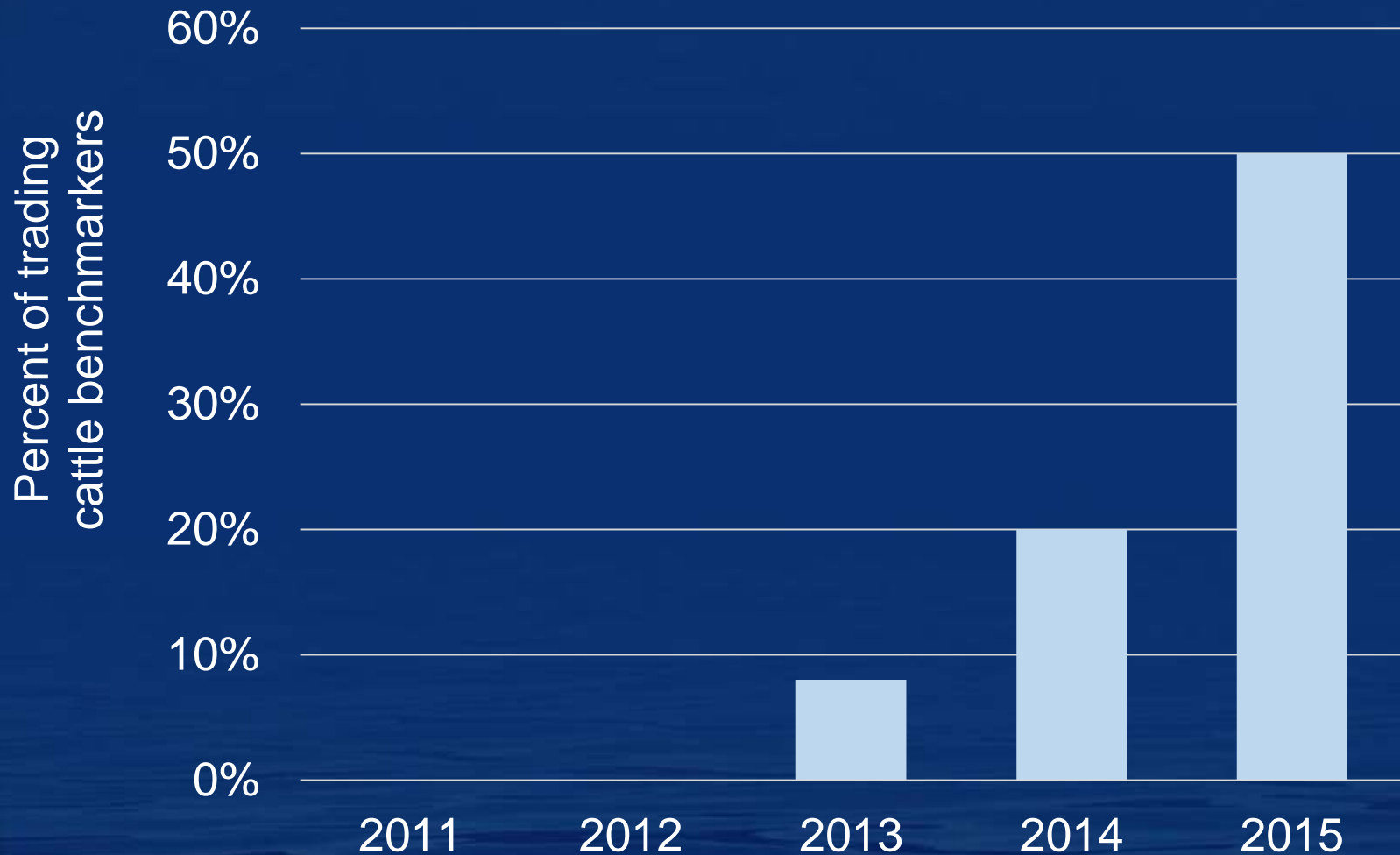


Trading cattle complement breeding enterprises

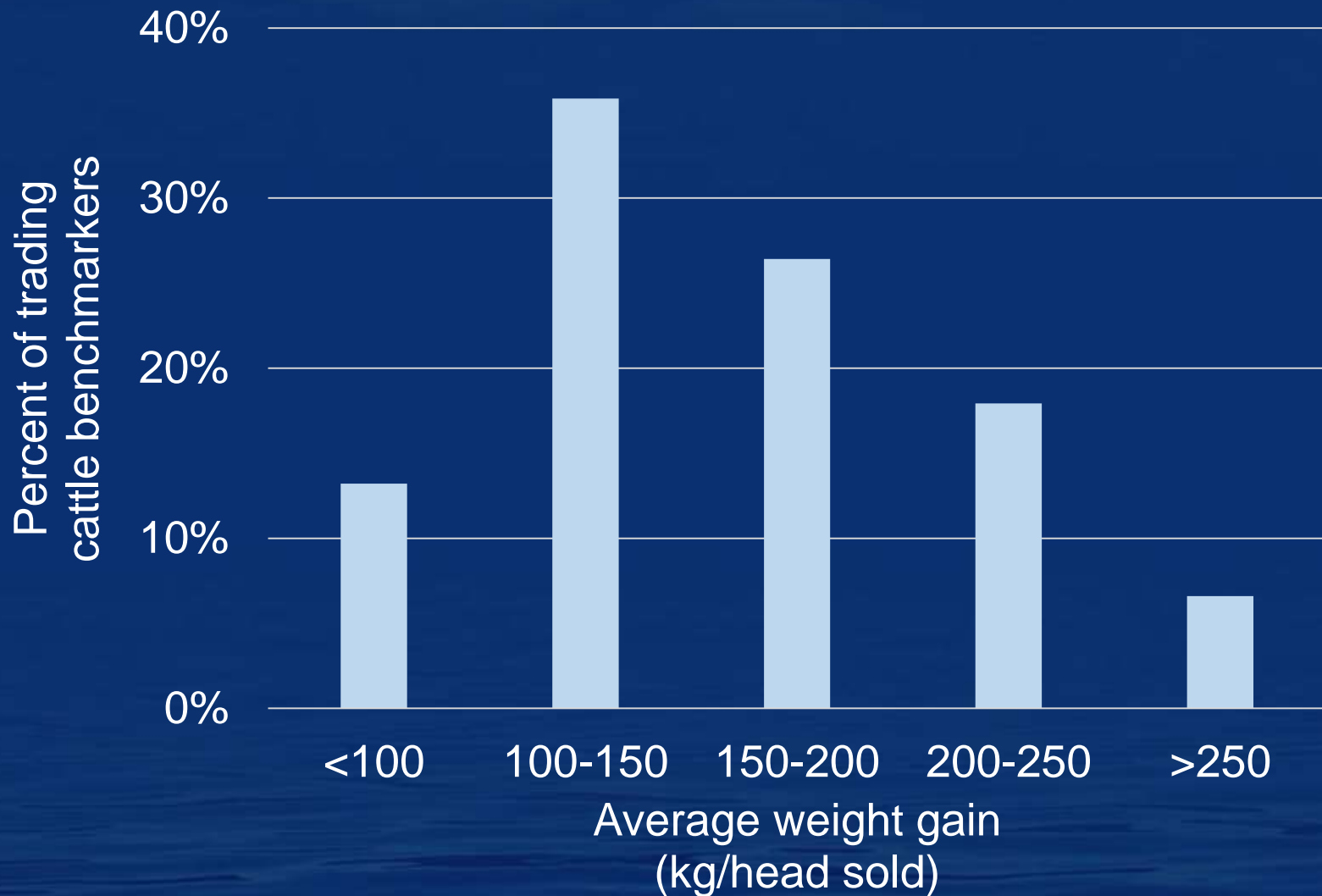


A sign of the times

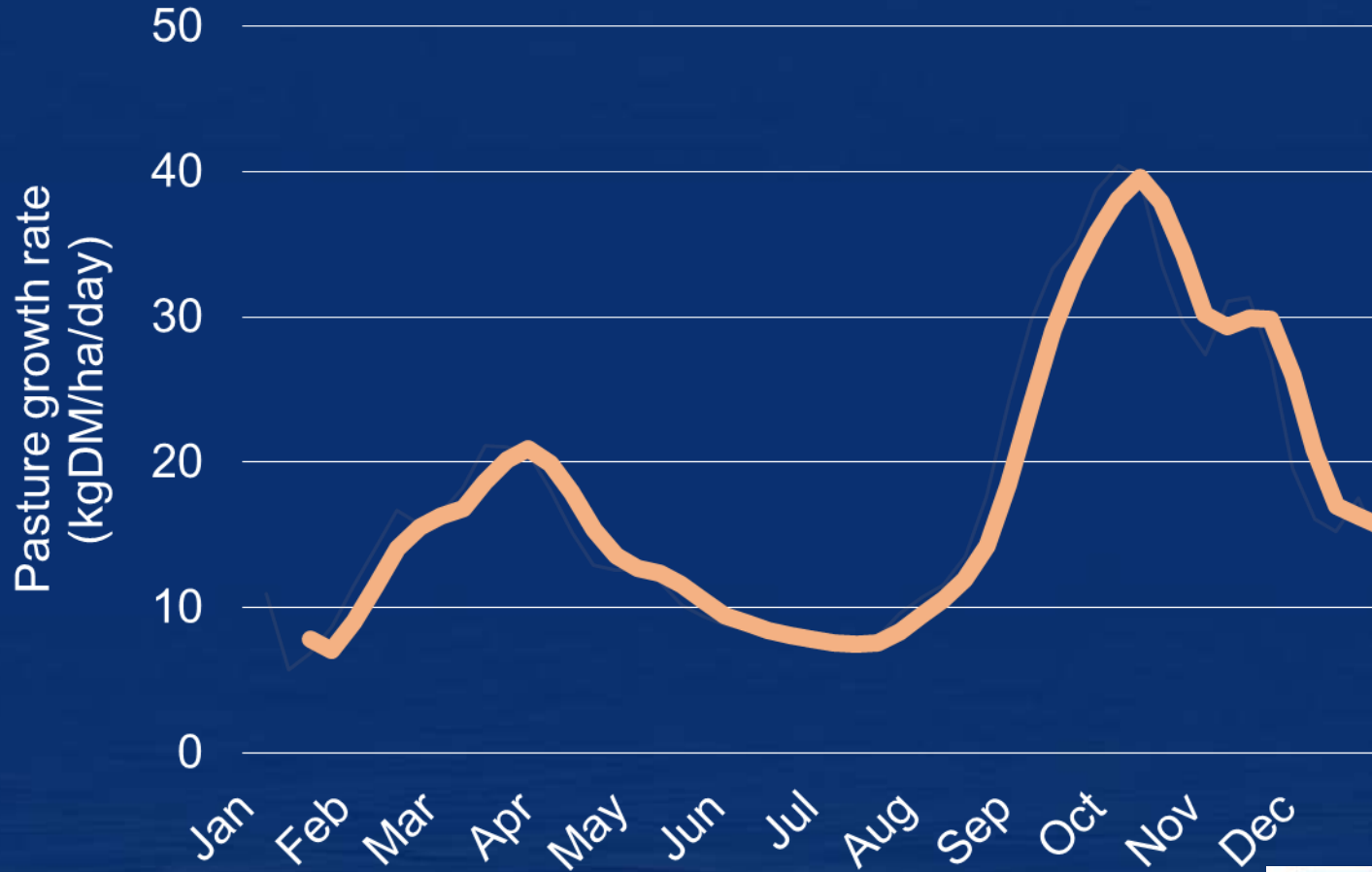
Sell to buy margins $> \$0.40/\text{kg lwt}$



How much weight gain?



Most profitable systems are designed around this



Source: www.pasturesfromspace.csiro.au



HOLMES SACKETT

Higher prices = higher per head profits per head increase



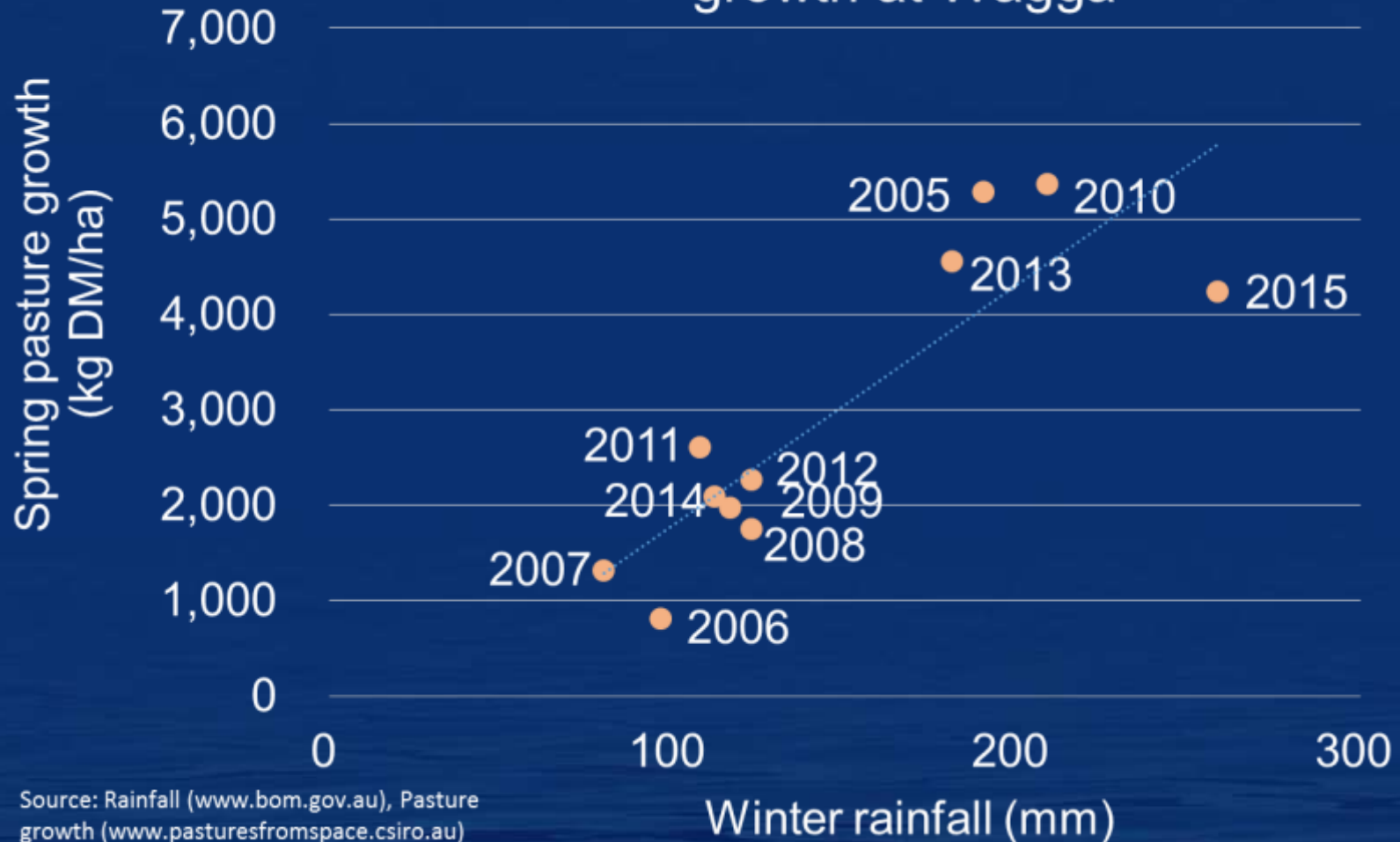
Are returns on investment better with high prices?



Are you prepared?

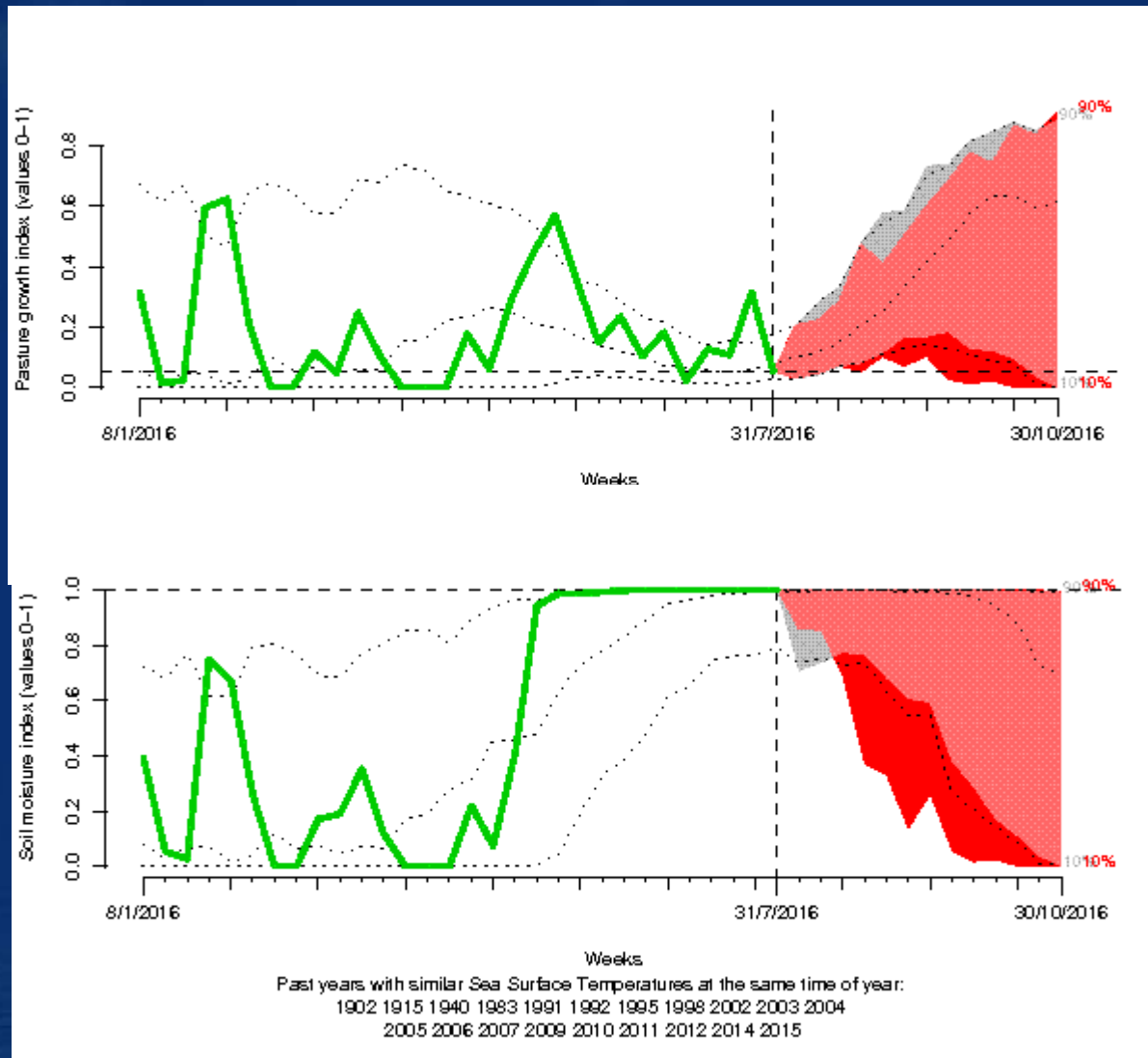


Winter rainfall x spring pasture growth at Wagga



Source: Rainfall (www.bom.gov.au), Pasture growth (www.pasturesfromspace.csiro.au)

Are you prepared?

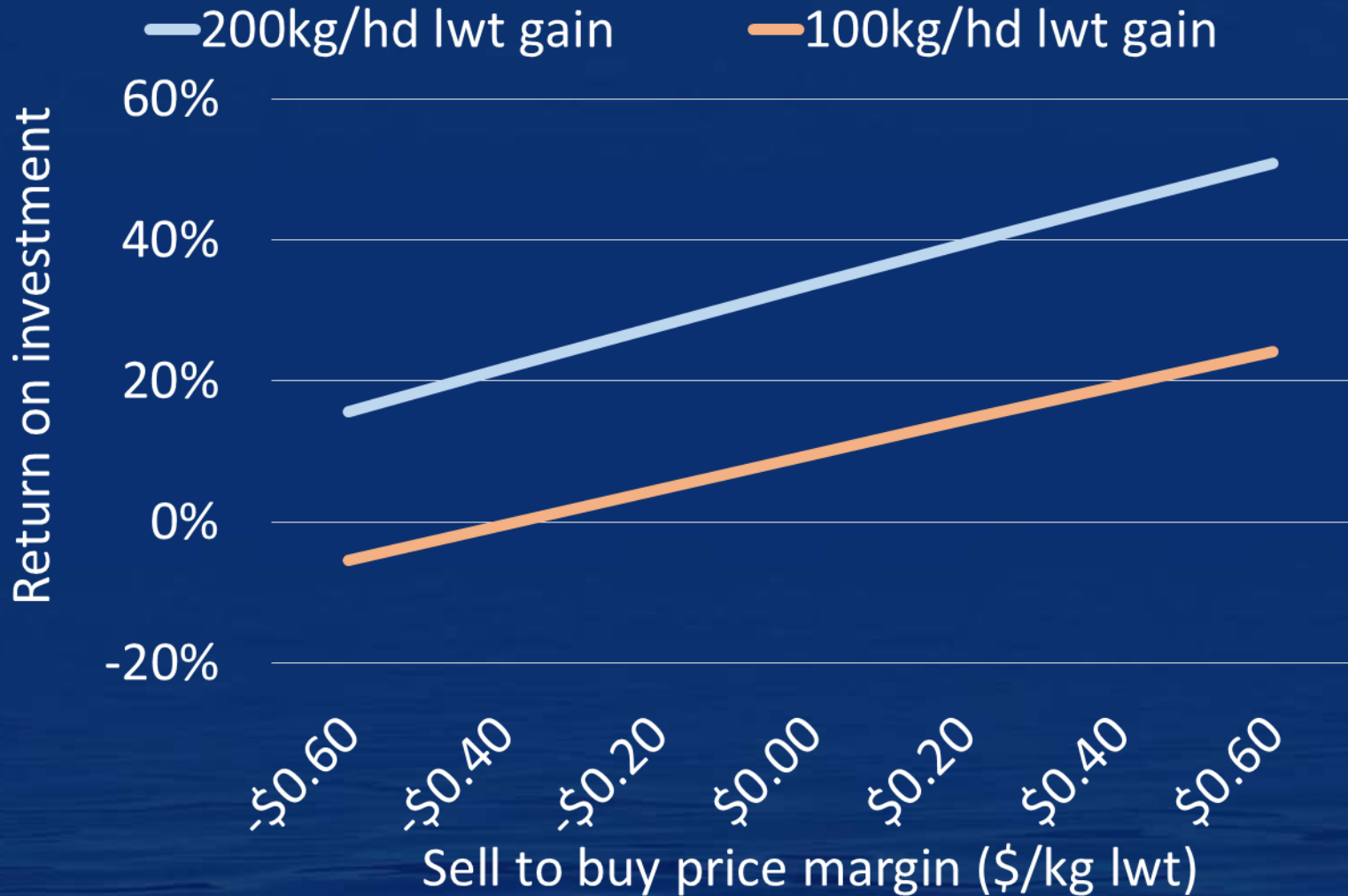


Purchase weight matters



Weight gain matters

Buy \$4.00/kg lwt at 300kg/hd



Key messages

- Weight gain is a profit driver so pasture quality is critical.
- Your market view should frame your trading decisions.
- If you're a trader trade the best margin animals.

