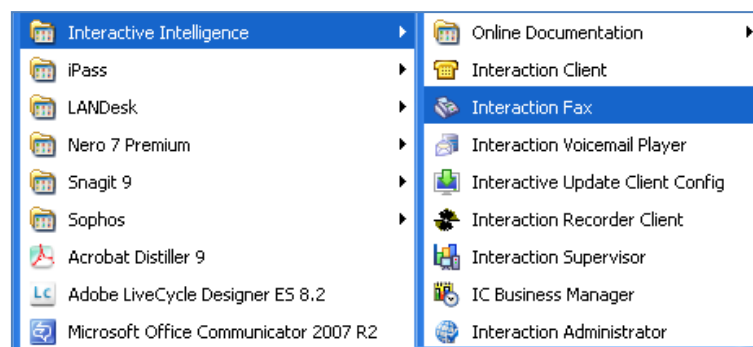


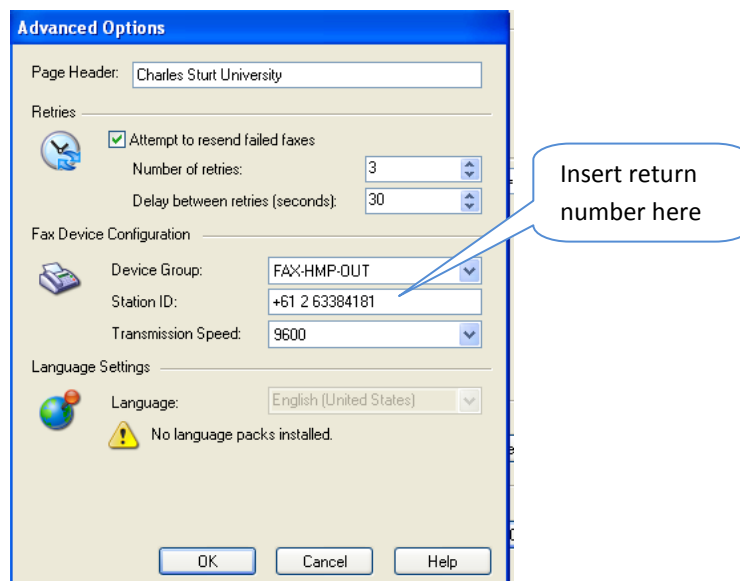
## How do I change the return number when sending a fax?

When you send a fax you may wish to put in a return number other than the one from which you have sent your fax. The return number will display in the letterhead which goes with your fax. To do this, follow these steps:

- Open Interaction Fax using either the desktop shortcut or through the 'Start' menu by clicking on 'Programs', 'Interactive Intelligence', 'Interaction Fax'



- Go to 'Tools', then choose 'Options'
- Click OK to connect if the box shows
- Click Advanced Options down the bottom right
- Enter the outgoing number as the Station ID. This MUST be in the following format - +61 2 xxxx xxxx (e.g. if you would like your outgoing fax to show as DITs fax number, you would enter +61 2 6338 4181)



- Click OK then OK again and close Interaction Fax, this setting will remain unless Interaction Fax is reinstalled