

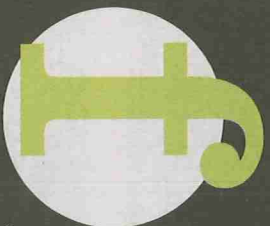
As the caption says, this photograph is of Fitzmaurice Street on May 14, 1870 when the river rose to 10.6 metres. This was the flood that moved Hunter's from the lower end of Fitzmaurice Street (in the vicinity of the ABC Radio Station) to where it is now, opposite the Court House. [RW98/25].



Water flooded into the buildings between Baylis Street and the river in 1950. This photograph shows the old watercourse (lined with trees) that ran from the Lagoon, through the block between Baylis and Berry streets, and then drained into the swampy area that became Bolton Park [RW2676/2].

Flooded Wagga Wagga under water

at the archives
Wayne Doubleday



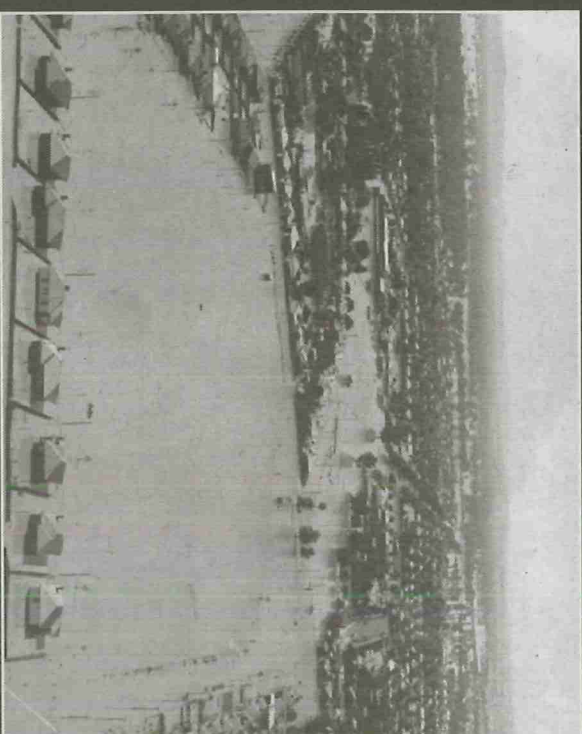
loods are not a new experience for Wagga Wagga, though it has been many years since the residents of Central Wagga have felt the threat firsthand. Since the levee system was finished in

1962, the river has never flooded the main part of the city: North and East Wagga being the only areas to be inundated.

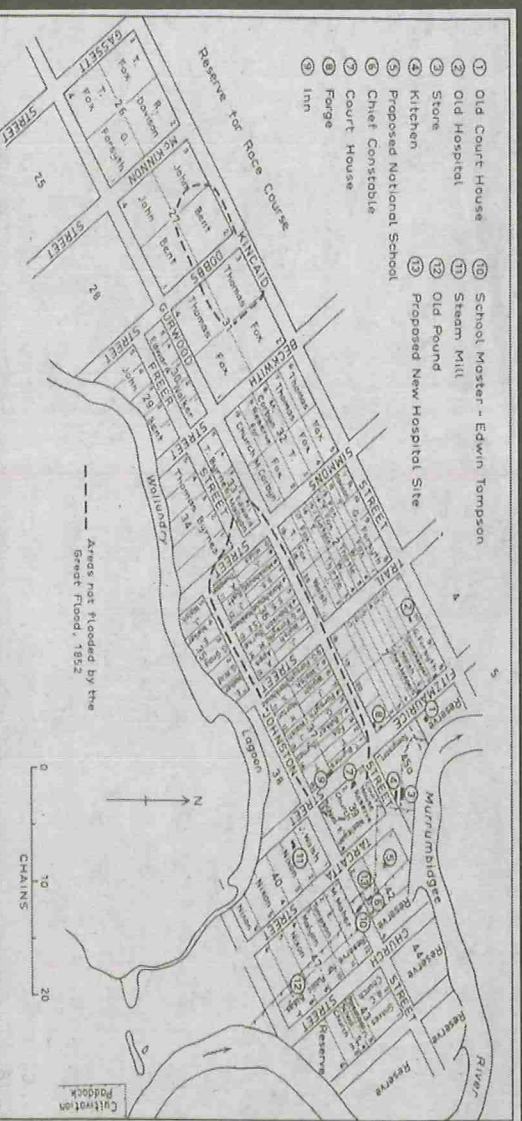
Of the many floods Wagga has experienced since it was gazetted in 1849, the 10-metre mark has only been reached nine times – the years being: 1852, 1853, 1870 (twice that year), 1891, 1925, 1950, 1974 and now in 2012.



This photograph shows Baylis Street during one of the 1891 floods. Four flood peaks were recorded that year, the highest being on June 29 at 10.46 metres. Here, the photographer is standing at the intersection of Baylis and Morrow streets and the water can be seen to reach just past the Baylis and Thompson Street intersection [RW98/25].



In 1950 the river reached 10.13 metres. This photograph reveals what happened when the Wollundry and Flowerdale Lagoons overflowed – water covered the whole of the Duke of Kent Oval, inundating the new houses surrounding the area. [RW2676/1].



This hand-drawn map of Wagga Wagga shows the only two areas of the village that the water did not reach in 1852 – the hill between Gurwood and Johnston streets and the rise bounded by Kincaid, Beckwith, Gurwood and McKinnon streets [RW1150].

Compiled by Jilian Kohlhagen

The CSU Regional Archives is extending its opening hours to include the first Saturday of every month. On these days, the archives will be open from 10am to 3pm. The next Saturday opening will occur on April 14. This trial initiative has been put in place to cater for those researchers who are unable to visit the archives on weekdays during normal business hours. It is hoped that enough researchers and visitors will avail themselves of this service to warrant it becoming a permanent occurrence.

what you need to know

■ The CSU Regional Archives are open Monday to Friday, 9am to 5pm. Located in the Blakemore Building on South Campus of the university, access can be gained via College Avenue or Hely Avenue. Members of the public are welcome to visit the search room, where professional archival staff can assist with inquiries. For those people unable to visit the archives in person, staff can provide a research service for straight-forward inquiries for a fee of \$55 per hour including copying and postage. For further information, phone 02 6925 3666, email archive@csu.edu.au, or visit our website at www.csu.edu.au/research/archives for a full listing of holdings and more detailed information.