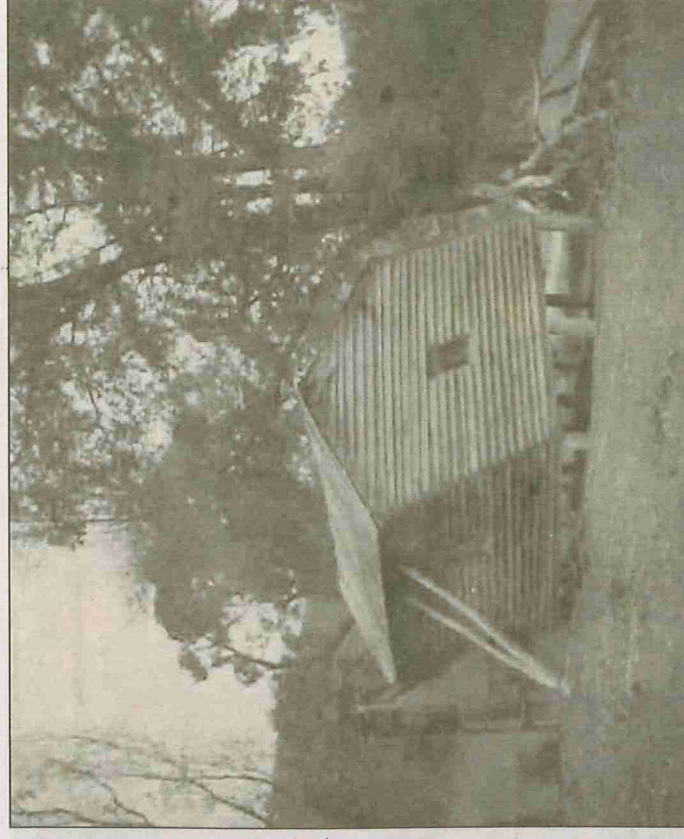


## what you need to know

■ The CSU Regional Archives are open Monday to Friday, 9am to 5pm. Located in the Blakemore Building on South Campus of the university, access can be gained via College Avenue or Hely Avenue. Members of the public are welcome to visit the search room, where professional archival staff can assist with inquiries. For those people unable to visit the archives in person, staff can provide a research service for straight-forward inquiries for a fee of \$55 per hour including copying and postage. For further information, phone 02 6925 3666, email [archive@csu.edu.au](mailto:archive@csu.edu.au), or visit our website at [www.csu.edu.au/research/archives](http://www.csu.edu.au/research/archives) for a full listing of holdings and more detailed information.



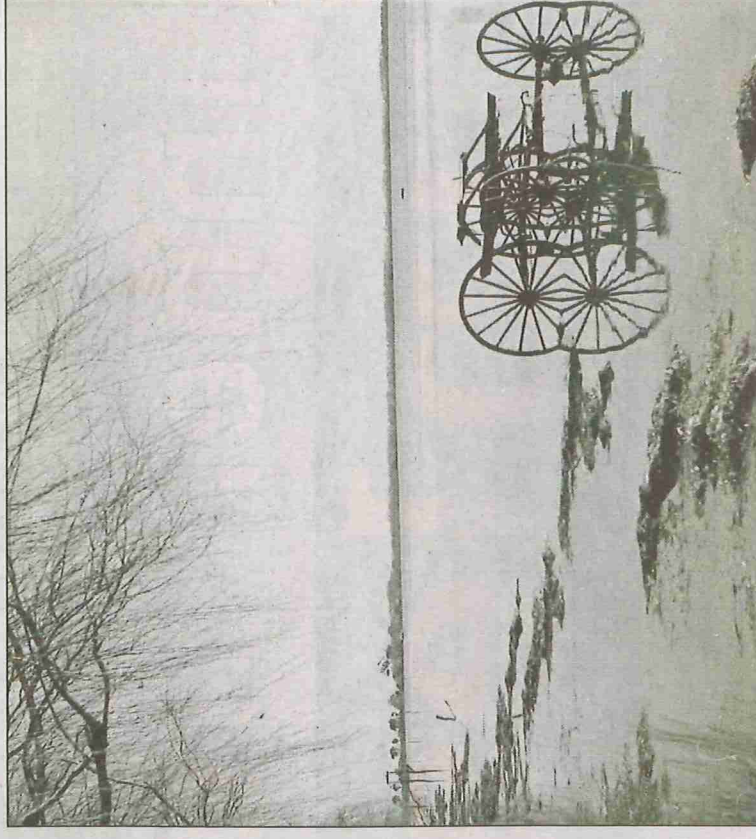
From the Alfred Greene collection (RW1247/3): "Oreel Shed, 1928 – You sit up and eat properly."



From the Alfred Greene collection (RW1247/3): "Accommodation – Learmont's saw mill – after being struck on one corner by falling limb from large elm tree on right. At present disused, hut is still habitable. Had dinner here today. May 26, 1957. 2.35pm. Cloudy – no sun."



From the Murray Valley Development League collection (RW214/89): "The 370-foot high rockfill Blowering Dam during construction. Storage of water will commence in 1968".



From the Murray Valley Development League collection (RW214/90).

# Saying it all with pictures



at the archives  
Wayne Doubleday



picture is worth a thousand words" – this is a phrase that, though well-used, deftly describes how important photographs are to our history. They have become indispensable to us in describing the history of a person, a place or a time. Photographs can also be an interesting type of record in that they often document more than what was intended at the time.

For example, a photo taken of a little girl playing in a street can also inadvertently demonstrate fashions, transport, architecture, as well as provide evidence of technology (ie. the techniques used to create the image itself). The CSU Regional Archives has an extensive collection of photographs, negatives, slides and film, of which many of you would be aware that the photographs by Tom Lennon comprise a significant part. Our search room is always open for the public to come and browse through our photograph collections, whether for research purposes or just out of interest. Copies can be made from most photograph collections and we are always glad for help with identifying unknown faces and places. While we did get a fantastic response to our plea for people to come and identify people in the Lennon Collection, there are still many images that have gone unidentified.

- Some of our larger image collections include:
- Reginald Sharpless (photographs of Mossgiel Station and surrounds; 1920s)
  - Albert Greene (includes photographs of Tumut and Kosciuszko National Park; 1920s to 1970s);
  - Clive "Bob" Roberts (aerial photographs of farming properties from Forbes to Gerogery, Tumbarumba to Narrandera; 1980s);
  - The Riverina Regional Committee of the National Trust (photographs of houses, shops, halls and other buildings all over the Riverina);
  - Murray Valley Development League (Snowy Mountains, paddle steamers, weirs, people and towns along the river; 1940s to 1970s);
  - *The Rural News* (street scenes, harvest, cattle and sheep, shows, field days);
  - Wagga Teachers' College;
  - South Wagga Public School;
  - Wagga Base Hospital.

Compiled by Jillian Kohlhagen