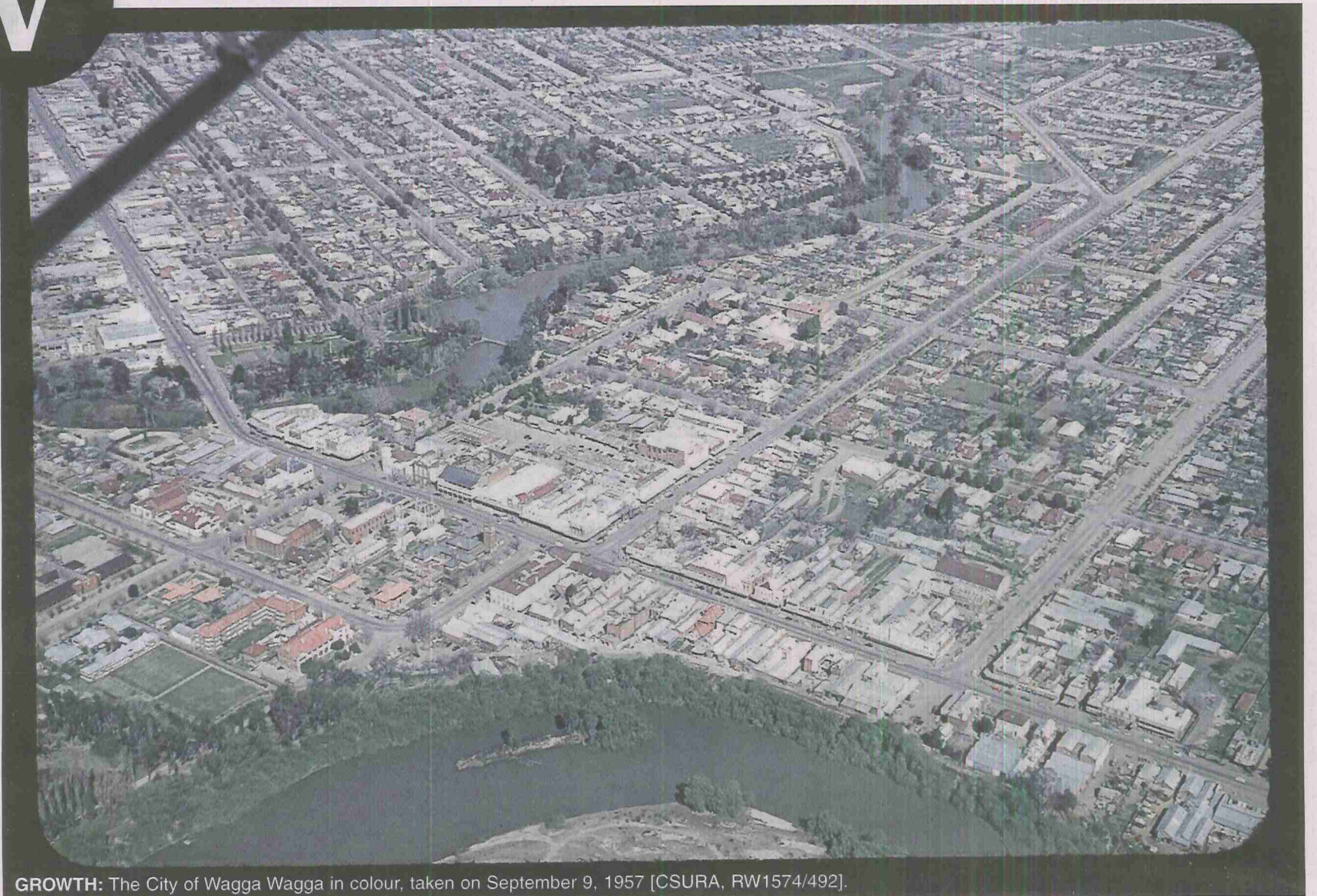


The CSU Regional Archives is extending its opening hours to include the first Saturday of every month. On these days, the archives will be open from 10am to 3pm. The next Saturday opening will occur on October 6, from 10am to 3pm. This initiative has been put in place to cater for those researchers who are unable to visit the archives on weekdays during normal business hours.



GROWTH: The City of Wagga Wagga in colour, taken on September 9, 1957 [CSURA, RW1574/492].

## what you need to know

■ The CSU Regional Archives are open Monday to Friday, 9am to 5pm. Located in the Blakemore Building on South Campus of the university, access can be gained via College Avenue or Hely Avenue. Members of the public are welcome to visit the search room, where professional archival staff can assist with inquiries. For those people unable to visit the archives in person, staff can provide a research service for straight-forward inquiries for a fee of \$55 per hour including copying and postage. For further information, phone 02 6925 3666, email [archive@csu.edu.au](mailto:archive@csu.edu.au), or visit our website at [www.csu.edu.au/research/archives](http://www.csu.edu.au/research/archives) for a full listing of holdings and more detailed information.

# Snapshot in time

at the archives  
Wayne Doubleday



**a**mong the many collections at the CSU Regional Archives is a small book titled *Moore's Australian Almanac*, containing a snapshot of Wagga in 1919. This "snapshot" is not in the form of a photograph or drawing; rather, it is a description of the town that precedes a list of government officials, societies and clubs, professional men and various businesses in Wagga.

The aim of these descriptions would have been to inform readers as well as to encourage them to visit. And, though such amenities as a sewage system, street lighting and asphalted roads and footpaths may seem fairly unexciting to us today, apparently in 1919 they were the height of progress in country towns.

In the same way, Cootamundra draws the reader's attention to its seating capacity, Gundagai praises its healthy climate, Junee is very proud of its improved water supply, and Narrandera's "splendid sewage system and electric lights" are one of the town's highlights.

An interesting sign of the times evident in this small book is in the way that, while many of the advertisements are promoting motor garages, the descriptions of each town in the almanac have a heavy reliance on rail – the distances, the station amenities, etc. In 1919, the railway line to Wagga, for example, was only 40 years old and trains still would have been the most comfortable and easiest way to travel.

■ **Wagga**  
This cathedral city is situated on the Murrumbidgee, 341 miles from Sydney and 267 miles from Melbourne on the main Southern Line. There is a railway refreshment room at the Wagga Railway Station. Wagga is the largest and best

## Upcoming event

**People and Place** is a current research project on the many layers of history in Wagga's main street undertaken by Dr Nancy Blacklow. In her research, Dr Blacklow has especially utilised the resources at the CSU Regional Archives, the Museum of the Riverina, and the memories of the people who lived, worked and played in Fitzmaurice and Baylis streets. A free presentation by Dr Blacklow on her research so far will be given at the Museum of the Riverina (Historic Council Chambers) on Saturday, September 15, at 11am. Bookings can be made through the Museum of the Riverina on 6925 9655.

country business centre, the capital of the Riverina, the richest pastoral and agricultural centre. Its avenues of beautiful trees are famous, having called forth the admiration of Max O'Rell, the renowned traveller and journalist, in his book on Australia. The installation of a modern sewage system has made Wagga the healthiest of country towns, typhoid fever and other scourges being unknown. The town is lit by gas from the municipal works. By-products have been so well used that there are 14 miles of asphalted roads and footways. There is an unlimited water supply from the Murrumbidgee, the reservoirs at the pumping station having been greatly enlarged. Its Agricultural Show held yearly in August is acknowledged to rank next to the Royal Show. Stock sales are held every Thursday at the Municipal Yards, where there are large yardings, and a brisk market. The Government Experiment Farm, four miles from the town, is the finest in New South Wales, and had trained hundreds of young men for the land, with great success. Electorate of Wagga Wagga. Population 15,000. District 65,000.

■ **Narrandera**  
On the Murrumbidgee River, 60 miles from Junee at junction of Hay and Tocumwal lines, and 353 miles by rail from Sydney. Pastoral and agricultural country, large areas of which have been successfully put under wheat, and the district is rapidly changing from pastoral to the agricultural industry. The Murrumbidgee Irrigation Area, now settled with a population of 3000, is in operation 15 miles of the town, Yanco being 14 miles and Leeton

19 miles away. The town water supply is provided with a large reservoir kept full by engine pump erected on the bank of the river. The town is provided with splendid sewerage and electric light. Commonwealth electorate of Riverina. State Electorate of the Murrumbidgee. Population 3000. Rail direct.

■ **Gundagai**  
Is situated on the Murrumbidgee River, 298 miles by rail from Sydney. The district contains rich agricultural and pastoral land, maize and wheat being produced, the latter in large quantities. It is also noted for the quantity and variety of its fruits. Town water supply. The climate is a particularly healthy one. Electorate of Cootamundra. Population 1921. Rail direct.

■ **Junee**  
This rising and important town is situated at the junction of the Southern and South Western Railway, 292 miles from Sydney and 23 miles from Wagga, and is surrounded by fine pastoral and agricultural country. The water supply is improved, and water is now pumped from the Murrumbidgee River, a distance of 25 miles. The celebrated vineyards of Mr J. J. McWilliams, more than 50 acres, are situated a mile out of the town. Population 3688. Rail direct.

■ **Cootamundra**  
This township is 257 miles by rail from Sydney, and is situated in the centre of a large pastoral, agricultural and mining district. There is a fine park and recreation ground of some 12 acres in the centre of the town. The storage dam will hold 136,511,000 gallons of water; it is four miles from the town. Gas and water have been laid on the town. A theatre in Town Hall is said to be one of the finest outside Sydney, and will seat 850 persons comfortably; amphitheatre to hold 1000; Parish Hall 400. Headquarters of Electorate of Cootamundra, number of voters 8000; in the Federal Division of Hume. Population 4000. Branch lines: Trains leave daily for Gundagai, Tumut, Temora, Wyalong, Borellan; extensions being constructed to Lake Cargelligo and Hillston, on the Lachlan River. The country adjacent is all first-class agricultural and dairying land. There are more than 100 registered dairies within a radius of 10 miles, and two butter and freezing factories in the town.

Compiled by Jillian Kohlhaugen  
References: *Moore's Australian Almanac*, 1919 [CSURA, RW2893/184]