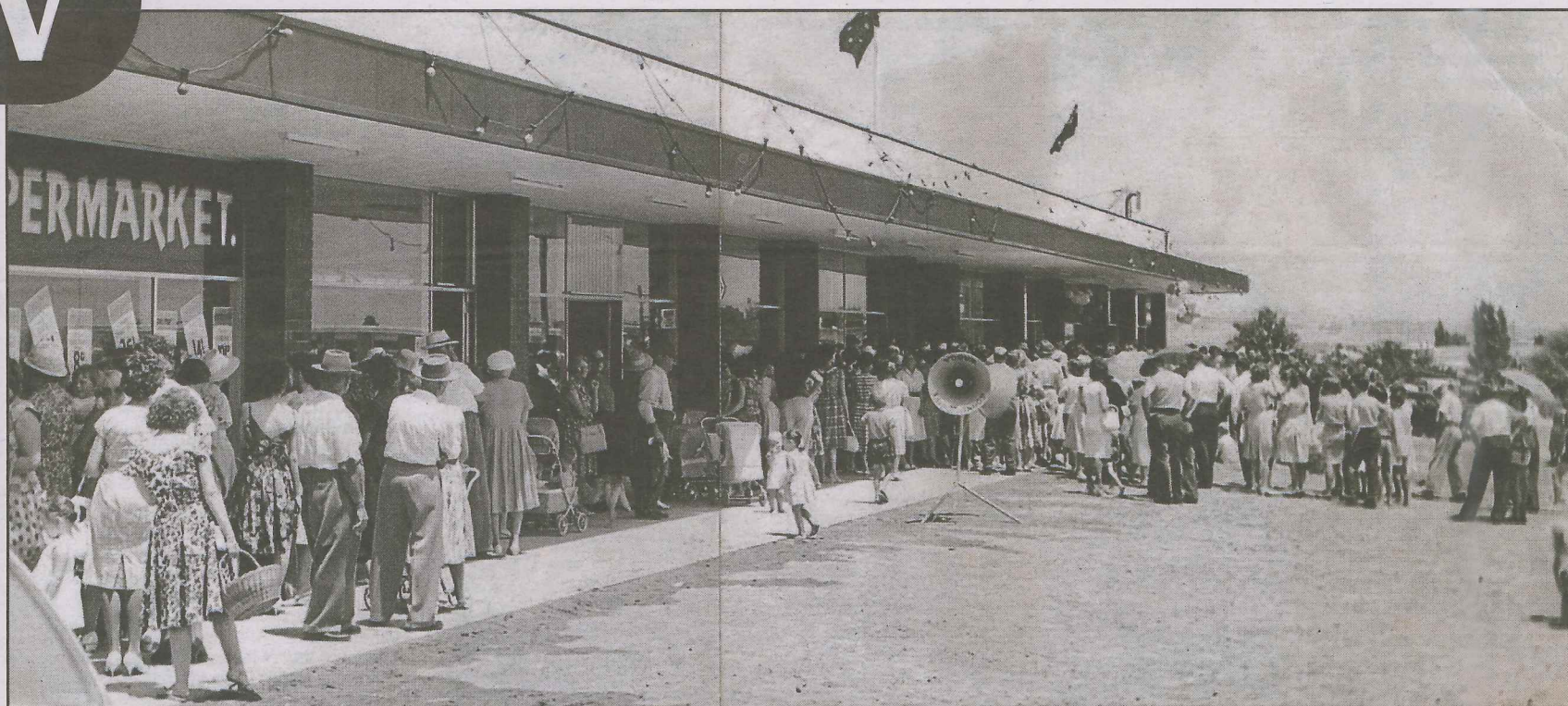


what you need to know

■ The CSU Regional Archives are open Monday to Friday, 9am to 5pm. Located in the Blakemore Building on South Campus of the university, access can be gained via College Avenue or Hely Avenue. Members of the public are welcome to visit the search room, where professional archival staff can assist with enquiries. For those people unable to visit the archives in person, staff can provide a research service for straight-forward enquiries for a fee of \$55 per hour including copying and postage. For further information, phone 6925 3666, email archive@csu.edu.au, or visit our website at www.csu.edu.au/research/archives for a full listing of holdings and more detailed information.

THE CSU Regional Archives is currently extending its opening hours to include the first Saturday of the month.

The next Saturday opening will be on December 7, 2013, from 10am to 3pm.



Official opening of the Turvey Tops Shopping Centre on December 3, 1963 (from the Tom Lennon Collection, RW1574/534).

TOPSY TURVEY

Wagga in a spin over first suburban shopping centre



at the archives
Wayne Doubleday



early 50 years ago to the day, a milestone in Wagga's history was reached.

On December 3, 1963, the Turvey Tops Shopping Centre was opened.

This event was a huge deal at the time given that it was the first suburban shopping centre in Wagga.

The Corner Store

OVER the previous 50 years, Wagga had been growing steadily south of Edward Street. Prior to WWI, with the exception of William Love's Estate (the area made up of Collins, Flinders and Macleay Streets) no subdivision had occurred within what is now Turvey Park. But the 1920s changed that.

By 1925, there were streets laid out and a few houses already built between Coleman Street and the railway line and lots were ready to be sold between Coleman and Urana.

Over the next 20 years the subdividers steadily made their way south, with plenty of professionals and retired farmers happily buying up lots and building California Bungalow-style houses or the slightly newer style named Colonial Revival.

During this time the "corner store" was well and truly finding its place in Turvey Park.

These small stores (some with adjoining residences) were the stalwart of housewives in the area who would have found the trek to Fitzmaurice Street an arduous undertaking for just a few groceries. While some are no longer used as shops,

many of these stores are still visible throughout Turvey Park.

In 1935, the intersection of Norman and Coleman streets supported two stores (a third later appeared on the opposite corner).

That year there was also a shop on the northern corner of Bourke and Urana streets and one on the corner of Coleman and Macleay.

By the mid-1940s, the stores in the Grandview Buildings were in place and as well as a shop halfway down the block in Urana Street, where the post office was later situated.

More corner stores appeared throughout the next decade, each fulfilling a need in their area for supplies closer to home.

The 1950s arrived with the Housing Commission moving in to develop Mount Austin, bringing another source of people seeking easier shopping.

And so, in 1962, Great Southern Enterprises Pty Ltd arose with a solution.

The Shopping Centre

GREAT Southern Enterprises Pty Ltd was a company of four directors, Mr Cec Carmody, Mr Brian Carmody, Mr Jack Osmond and Mr Jim Crowl.

These men, with the financial assistance of Phoenix and Provident Life Insurance companies, and the input of Mr Sel Rawlings, brought to fruition a plan for a shopping centre that had been in the making for only two years.

Early in 1962, Cec Carmody bought land in Fernleigh Road from the Housing Commission and just a year later, Mr PR O'Halloran, a local architect, drew up the plans for a shopping centre and hotel-motel.

In May 1963, the builders, Fitzgerald Hardware and Supplies Pty Ltd started work and by late November the shopping centre part of the project was complete.

The brand new Turvey Tops Shopping Centre opened on December 3, 1963, with the Member for

Wagga, the Hon Wal Fife officially opening the centre at 11am. *The Daily Advertiser* estimated 3000 people were at Turvey Tops that day – the supermarket reported recording around 1000 customers through its checkouts.

Great Southern Enterprises directors proudly proclaimed, in choosing tenants for the shopping centre, they had placed the accent on food and essential household requirements.

They had studied other regional shopping centres and found what mistakes had been made in order to ensure the success of Turvey Tops.

A number of the tenants had previously been in shops spread throughout Turvey Park and some were already situated in Fitzmaurice Street but they all saw the benefits to shoppers of being in one location.

The following stores were the first tenants of Turvey Tops Shopping Centre:

- Foodland Supermarket (Mr Brian Carmody)
- Dorothy's Beauty Salon (Mrs Dorothy Osmond)
- Costigan's Chemist (Mr John Costigan)
- Howard's Hardware Supplies (Mr LG Howard)
- Fish and chip shop
- Berrigan's Shoe Centre (Mr TH Berrigan)
- Mount Austin Post Office (Mrs Mavis Kelly)
- Men's Hairdresser (Mr Lyle Galvin)
- Lennon's Delicatessen
- Leisure Wear Fashions (Mrs Sheelagh Hale and Mrs Beryl Whiting)
- Turvey Park Sports Store (Mr Bob Ashton)
- Bakery
- "AA" Health and Bulk Foods
- Cross's Newsagency (Mr K Cross)
- American Dry Cleaners (John Ryan)

– Compiled by Jillian Kohlhausen and Lauren Carroll

References: *The Daily Advertiser* December 3, 1963, December 4, 1963; Wagga City Council rate and valuation registers, 1908, 1925, 1935, 1945 [CSURA RW1429].

SEARCH HISTORIC NEWSPAPERS ON LINE



Trove ... then visit www.trove.nla.gov.au/newspaper for your Treasure Trove of Riverina history

The Daily Advertiser

Wagga Wagga City Council

Charles Sturt University

Wagga and District Historical Society

