

Rob Woodgate

Senior Lecturer in Veterinary Parasitology

Veterinary Diagnostic Laboratory

School of Animal and Veterinary Sciences

Charles Sturt University

Wagga Wagga NSW

www.grahamcentre.net

Sheep Nematodes (round worms)

- **Brown stomach worm**
(*Teladorsagia* (was *Ostertagia*)
circumcincta)
- **Black scour worm**
(*Trichostrongylus* spp.)
- **Barber's pole worm**
(*Haemonchus contortus*)



The costs of sheep worms

| | Total annual cost | Cost of the effects of worms – liveweight, wool growth, scouring, deaths | Cost of worm control – WEC, chemical, labour |
|---|--------------------------------|--|--|
| McLeod (1995) | \$ 222 million per year | \$ 141 million per year | \$ 81 million per year |
| Sackett <i>et al.</i> (2006) | \$ 369 million per year | \$ 321 million per year | \$ 48 million per year |
| Carmichael (2009) – prime lambs in Vic, SA & Riverina | \$ 66 million per year | \$ 50 million per year | \$ 16 million per year |

Carmichael (2009) measured reductions in liveweight gain of 20 grams per head per day

BUT “scouring and sheep deaths” were not a common feature (WECs = approx. 500 epg).

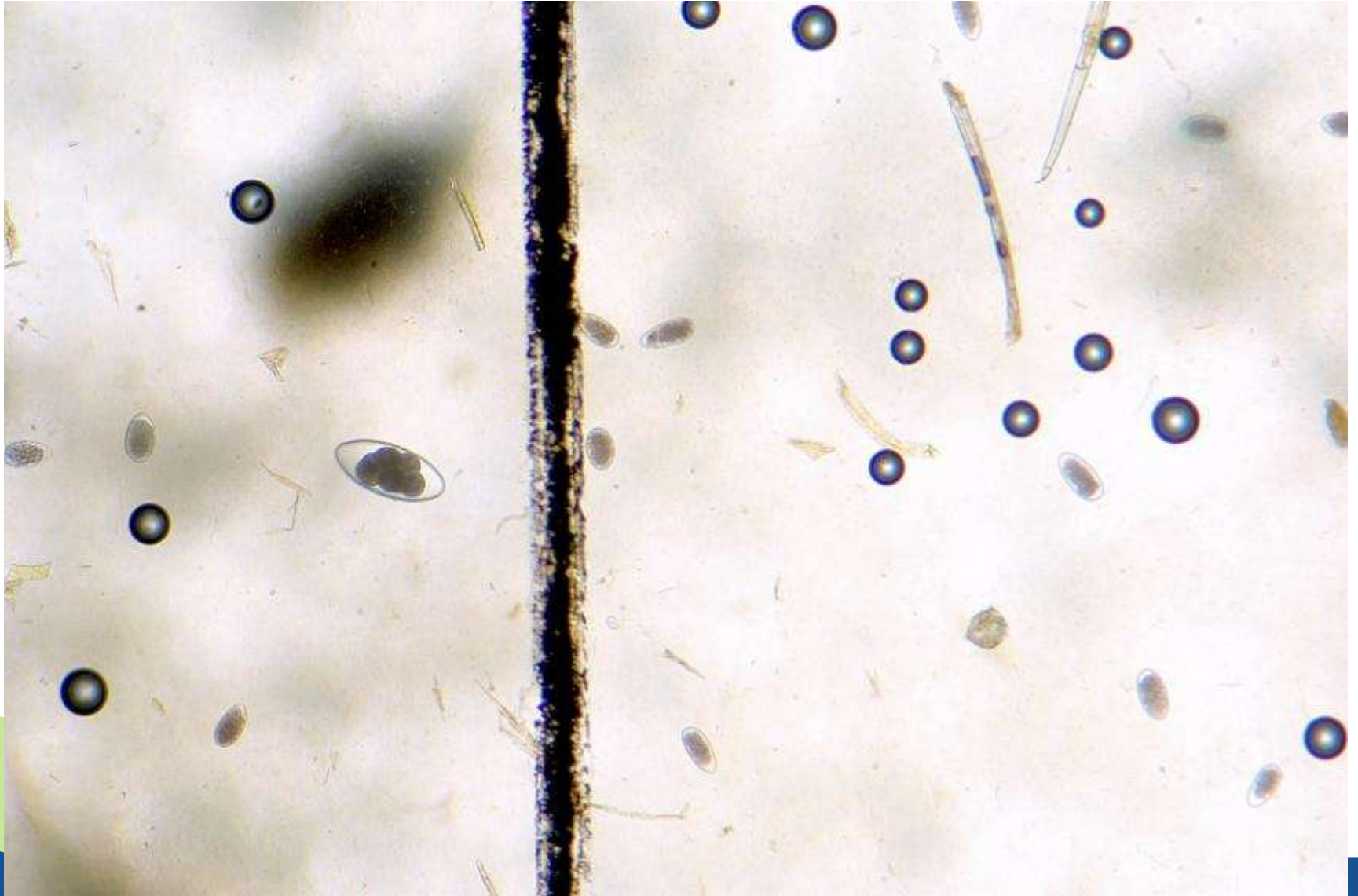
1st step = avoid the invisible costs of worms



Avoid the invisible costs of worms



Avoid the invisible costs of worms



The costs of sheep worms

| | Total annual cost | Cost of the effects of worms – liveweight, wool growth, scouring, deaths | Cost of worm control – WEC, chemical, labour |
|---|--------------------------------|--|--|
| McLeod (1995) | \$ 222 million per year | \$ 141 million per year | \$ 81 million per year |
| Sackett <i>et al.</i> (2006) | \$ 369 million per year | \$ 321 million per year | \$ 48 million per year |
| Carmichael (2009) – prime lambs in Vic, SA & Riverina | \$ 66 million per year | \$ 50 million per year | \$ 16 million per year |

Use a *known* effective drench

1995 prices
(sheep = \$25 per
head) Besier

65% effective
drench

85% effective
drench

> 99% effective
drench

Use a *known* effective drench

| 1995 prices (sheep = \$25 per head) Besier | 65% effective drench | 85% effective drench | > 99% effective drench |
|--|-------------------------|-------------------------|---------------------------|
| Greasy wool | -450g | -90g | - |
| Liveweight | -6kg | -1.2kg | - |

Use a *known* effective drench

| 1995 prices (sheep = \$25 per head) Besier | 65% effective drench | 85% effective drench | > 99% effective drench |
|--|-------------------------|-------------------------|---------------------------|
| Greasy wool | -450g | -90g | - |
| Liveweight | -6kg | -1.2kg | - |
| RETURN | \$0 | + \$2.50 | + \$7.00 |

Use a *known* effective drench

- **New Zealand lamb work in 2010 and 2012 (replicated plots).**

- **Fully effective drench compared to 50% to 70% effective drench**

returned 10% to 14% increase in lamb carcass value over 3 to 5 months.

[WECs 500 to 1000 epg]

Take home messages

- **Worms can be a significant cost for a sheep enterprise.**
- **The effects of worms can be invisible in the paddock – *do some WECs.***
- **If you need to treat for worms, make sure you know you are using a fully effective drench (*don't guess*).**



Search wormboss.com.au

Type your search text here...



HOME

YOUR PROGRAM

WORMS

TESTS & TOOLS

DRENCHES

NEWS

WormBoss

Australia's sheep worm control resource

Subscribe To WormBoss

Email updates that save you time and money!



Solve your current worm problem

Regional Drench Decision Guides make it easy to decide whether to drench now, the length of protection needed and when to check again.



Attend worm control training

Workshops, seminars and professional development training for sheep producers, industry advisors and professionals and stock and station agents.



Read the latest WormBoss news

Find out whether worms are on the move in your state and read our monthly feature article and news releases.



Look Who's Using WormBoss

Greg & Kathie Tighe, Guyra, NSW

A microscope in the home office and worm tests that can be done as dinner is being prepared have made the management of parasites a lot simpler.

[Read more](#) ▶



Don Perkins, Dirranbandi, QLD

Don Perkins doesn't remember worms being much of a problem in sheep when he was growing up on 'Nelyambo', near Dirranbandi, Queensland.

[Read more](#) ▶



Rick & Jenny Robertson, Bengworden, VIC

Wetter than usual conditions, coupled with warm temperatures, means 2010 promises to be a bumper year for sheep producers.

[Read more](#) ▶



Simon & Penny Foster, Campbell Town, TAS



WormBoss was developed by the Australian Sheep Industry CRC and Australian Wool Innovation, with the support of Animal Health Alliance.

An alliance between Charles Sturt University and
NSW Department of Primary Industries



Department of
Primary Industries

www.grahamcentre.net

