



Charles Sturt  
University

# Communication Precinct

## 2025 EXTERNAL HIRE GUIDE

Faculty of Arts and Education  
Charles Sturt University

Charles Sturt University - TEQSA Provider Identification: PRV12018 (Australian University). CRICOS Provider: 00005F.

# Contents

<b>Introduction .....</b>	<b>3</b>
The Communication Precinct .....	3
<b>The Spaces .....</b>	<b>4</b>
Media Production Studio .....	4
Podcast Studios .....	7
Editing Suites .....	9
Boardroom and Breakout Space .....	11
Collaborative Lab .....	13
Ponton Theatre .....	14
Other Hire Information .....	16
<b>How to Book a Space .....</b>	<b>18</b>
<b>Appendix 1. Summary of hire rates .....</b>	<b>19</b>
<b>Appendix 2. Buildings 1401, 1399 and carpark P20 – campus view .....</b>	<b>20</b>

# Introduction

## The Communication Precinct

Housed within the centre of Charles Sturt University's picturesque Bathurst Campus, the communication precinct comprises numerous authentic teaching and production spaces, all incorporating state of the art equipment. This facility, developed in collaboration with leading industry stakeholders, is a hub of creative industry practice and is the flagship space for the [Bachelor of Communication](#) at Charles Sturt.

The spaces within the precinct can be used for:

- Special events
- Content creation
- Technical production
- Live streaming
- Educational and research use
- Community and cultural activities
- High end commercial and corporate events and activities.

These spaces are available for hire, from dry hire arrangements (the hire of spaces and equipment without accompanying technical support), to supported hire arrangements that includes the engagement of Charles Sturt technical and other staff.



# The Spaces

## Media Production Studio

This dynamic, multidisciplinary space is the largest TV and production studio in regional NSW.

The media production studio features:

- An infinity wall measuring 10m wide, 5m high and 4m metres deep
- A 9m wide greenscreen
- A full lighting rig with ARRI skypanel and Orbiter LX fixtures
- BirdDog 4K robotic cameras
- Vizrt’s Tricaster Elite 2 vision switcher capable of automated switching and managing livestreaming and virtual events
- Teleprompters
- A Behringer X32 rack
- A variety of Shure microphones and receivers
- Rode NTG2 microphones

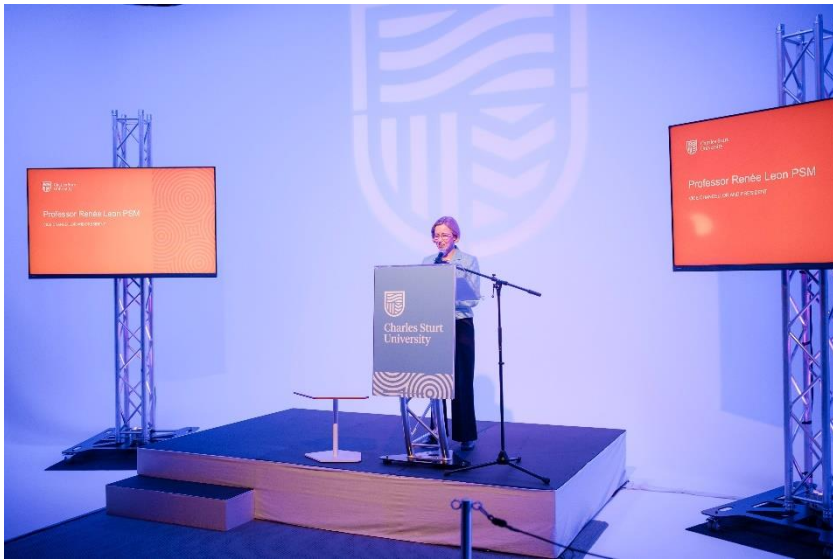
### Hire Rates – Media Production Studio (2 hours minimum)

Capacity 50 pax

Full day dry 8 hours	Full day supported 8 hours	Half day dry 4 hours	Half day supported 4 hours	Short hire dry 2 hours	Short hire supported 2 hours
\$750	Price on consultation	\$500	Price on consultation	\$300	Price on consultation

### MEDIA PRODUCTION STUDIO







## Podcast Studios

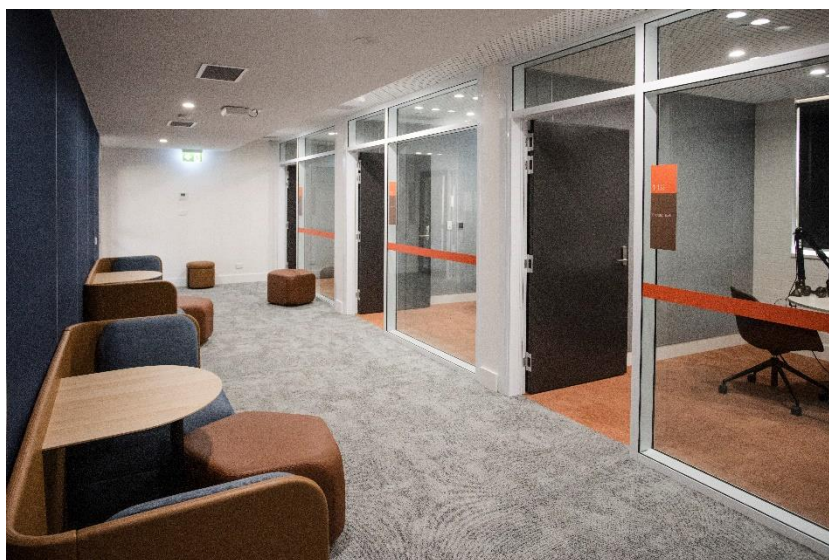
Our podcast facilities are comprised of three studios, each fitted with 4 Rode Podmic, headphones and a Rodecaster Pro II podcasting desk. Located alongside a comfortable lounge area, these studios are ideal for solo or collaborative recording work.

### Hire Rates – Podcast Studios (2 hours minimum)

Capacity 4 pax per studio

Full day dry 8 hours	Full day supported 8 hours	Half day dry 4 hours	Half day supported 4 hours	Short hire dry 2 hours	Short hire supported 2 hours
\$150 per studio	Price on consultation	\$75 per studio	Price on consultation	\$50 per studio	Price on consultation

### PODCAST STUDIOS







## Editing Suites

There are four multipurpose editing suites (1 x deluxe suite and 3 x standard suites) with:

- Dell Precision Workstations running Adobe Creative Cloud (BYO License)
- XDM-100 Microphones and headphones with Godox ES30 panel light
- Logitech BRIO Webcams for high quality streaming
- Loupedeck CT Control Surface as an editing interface.

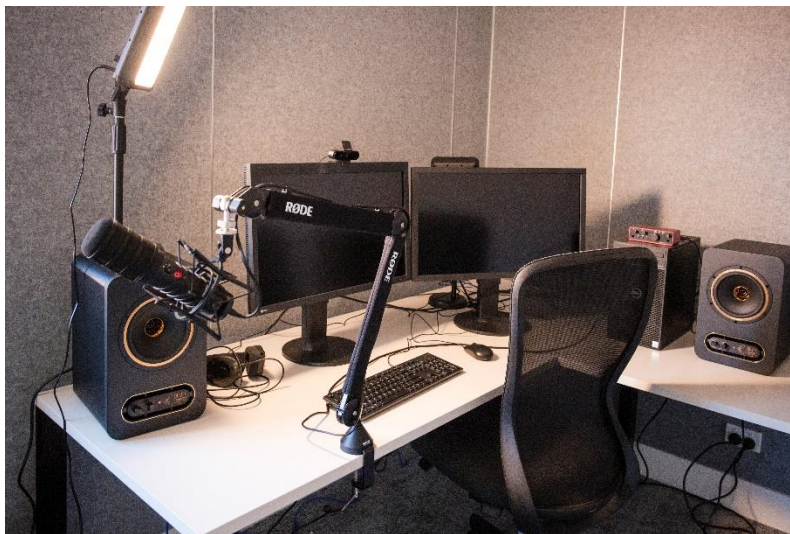
The deluxe suite – our largest editing suite – has a lounge area and 46-inch monitor included, to better facilitate collaborative project work.

### Hire Rates – Editing Suites (2 hours minimum)

Capacity 2 -3 pax for standard suite; 3-4 pax for deluxe suite

Full day dry 8 hours	Full day supported 8 hours	Half day dry 4 hours	Half day supported 4 hours	Short hire dry 2 hours	Short hire supported 2 hours
\$150 (standard)	Price on consultation	\$75 (standard)	Price on consultation	\$50 (standard)	Price on consultation
\$200 (deluxe)	Price on consultation	\$100 (deluxe)	Price on consultation	\$75 (deluxe)	Price on consultation

### EDITING SUITES





## Boardroom and Breakout Space

Our boardroom and breakout space are used for classwork in an environment that mirrors professional communication spaces. A perfect event space for small events such as workshops and strategy days, it includes a boardroom styled meeting room space with high end video conferencing capabilities. The space also features easy access to the editing suites if these are hired for complementary projects.

The boardroom features:

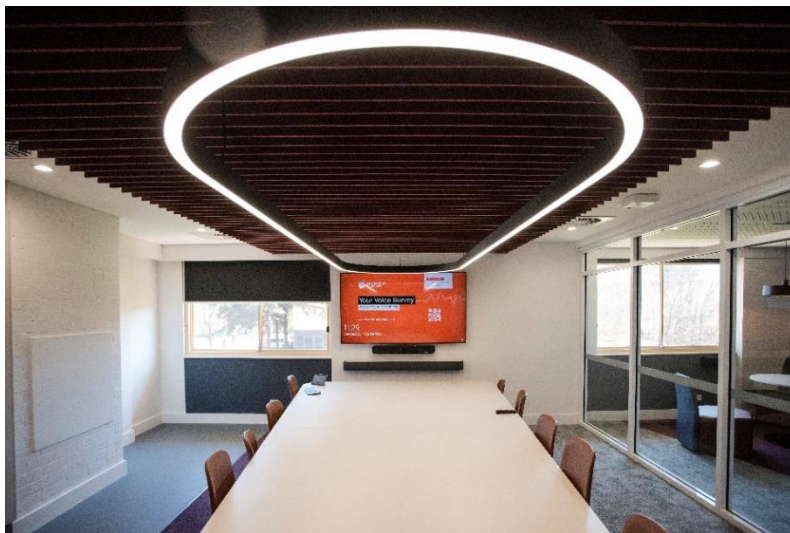
- Large boardroom style desk with 12 person seating capacity
- Videoconferencing capabilities with TEAMS and Zoom enabled
- A breakout space for up to 16 people with presentation capability
- A kitchenette.

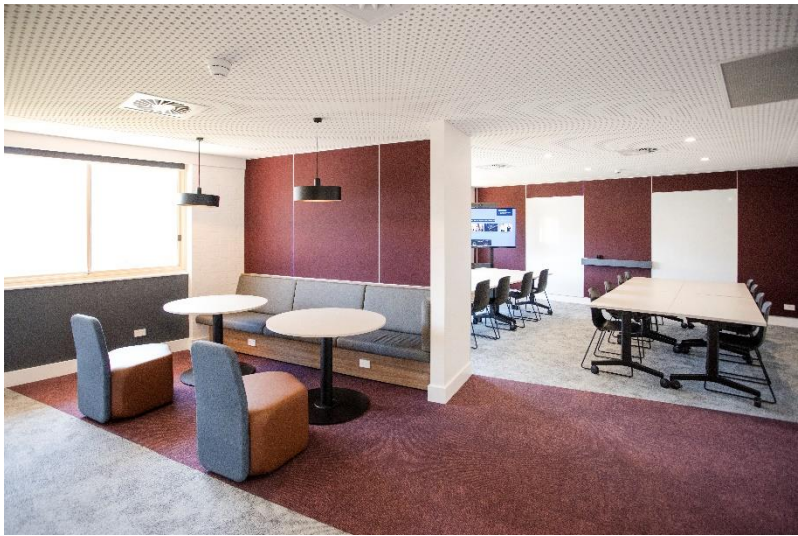
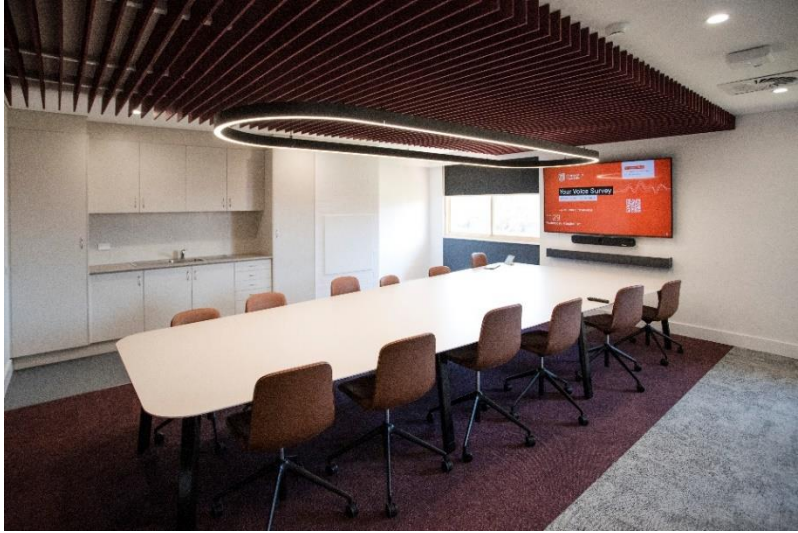
### Hire Rates – Boardroom and Breakout Space (4 hours minimum)

Capacity 2-20 pax

Full day dry 8 hours	Half day dry 4 hours
\$350	\$200

### BOARDROOM AND BREADOUT SPACE





## Collaborative Lab

Our collaborative lab is used for classwork in an environment that mirrors professional communication spaces. A perfect event space for small events such as workshops and strategy days, with AV presentation capabilities. The space also features easy access to the editing suites if these are hired for complementary projects.

### Hire Rates – Collaborative Lab (2 hours minimum)

Capacity 2-20 pax

---

Full day dry 8 hours	Half day dry 4 hours
\$350	\$200

---

### COLLABORATIVE LAB



## Ponton Theatre

If a larger presentation space is required, the Ponton Theatre is a leafy two minute stroll from the Communication Precinct. The theatre is an 80-seat venue with a courtyard and foyer for catering and front of house activities. Equipment includes a professional theatrical lighting rig, projection capability and 2 x handheld microphones.

### Hire Rates – Ponton Theatre (2 hours minimum)

Capacity 80 pax

Full day dry 8 hours	Full day supported 8 hours	Half day dry 4 hours	Half day supported 4 hours	Short hire dry 2 hours	Short hire supported 2 hours
\$500	Price on consultation	\$300	Price on consultation	\$200	Price on consultation

### PONTON THEATRE









## GREEN ROOM

Green room, dressing areas and production office can be hired on request.

## CATERING

CHEERS is an on-campus café located near the precinct. The hours of operation are 8:00- 3:00pm, Monday to Friday.

CHEERS can provide catering include canapés, charcuterie boards, sandwiches, tea and coffee etc. A one-week minimum lead time will be needed for requirements and numbers. CHEERS is licensed, and alcohol can be served at events.

Further information can be found here:

<https://about.csu.edu.au/services-facilities/events-and-catering>.

## GEAR AVAILABLE FOR HIRE

As a teaching and research institution, we have a range of technical gear available for hire. If you have specific needs, you can request this in the 'Contact Us' form.

- Theatrical and film lighting
- Cameras
- Truss/rigging
- Theatrical black drapes
- Staging
- Technical production services
- Design services.

## WORK INTEGRATED LEARNING

The Communications Precinct is the key on-campus learning facility for the Bachelor of Communication degree. Opportunities exist for student involvement in projects initiated by external hirers. This could be a small or large collaboration, at the discretion of the hirer. Please advise if you would like to explore this as an option, and a representative from the School of Information and Communication Studies will discuss this with you.

# How to Book a Space

## DETERMINE YOUR NEEDS

We advise consulting with our technical staff to discuss your needs and the opportunities available in the facility. There is a large store of technical and staging equipment that can also be hired. The technical staff will also advise on the type of inductions that may need to take place.

To start the process, we request that you first complete a 'contact us' form. Then one of our technical staff will contact you to discuss your request and arrange a consultation if required.

## FEES

Through consultation with our technical staff, we will determine a final hire fee, which could include discounted pricing for community and school groups, the bundling of multiple spaces together, and multi day rates.

## INSURANCE

Depending on the level and complexity of your project scope, hirers may need their own public liability insurance. This will be determined when making your booking.

## CONTACT

Please submit a request through our [Contact Us form](#).

## Appendix 1. Summary of hire rates

Space	Capacity	Notes	Full day dry 8 hours	Full day supported 8 hours	Half day dry 4 hours	Half day supported 4 hours	Short hire dry 2 hours	Short hire supported 2 hours
Media Production Studio	50 pax	The Green Room can be hired for an additional \$100 per event	\$750	Price on consultation	\$500	Price on consultation	\$300	Price on consultation
Podcast Studios	4 pax per studio	2 studios available	\$150 per studio	Price on consultation	\$75 per studio	Price on consultation	\$50 per studio	Price on consultation
Editing Suite (deluxe)	3-4 pax	1 suite available	\$200	Price on consultation	\$100	Price on consultation	\$75	Price on consultation
Editing Suites (standard)	2-3 pax	3 suites available	\$150	Price on consultation	\$75	Price on consultation	\$50	Price on consultation
Boardroom & Breakout Space	2-20 pax		\$350	-	\$200	-	-	-
Collaborative Lab	2-20 pax		\$350	-	\$200	-	-	-
Ponton Theatre	80 pax		\$500	Price on consultation	\$300	Price on consultation	\$200	Price on consultation

*Hire rates are indicative and subject to change*

*Prices are inclusive of GST*

