



Charles Sturt
University



Agriculture, Water and
Environment (AWE)
Research Institute





Join the future of agriculture, water and the environment

Charles Sturt research is an enduring and vital part of what we do, and a key priority within our 2030 University Strategy. Under the strategy we will grow our applied research in core focus areas by building strong industry/government/community partnerships and ensuring excellence in delivery.

Charles Sturt is emerging strongly from the pandemic as a streamlined, agile organisation that embraces new opportunities, particularly in the agriculture, water and environment strategic focus area. Underpinning this strategic focus area is the newly created Agriculture, Water and Environment (AWE) Research Institute, which commences operations in January 2022.

Accreditation for the university's three research centres – the Institute for Land, Water and Society (ILWS), the National Wine and Grape Industry Centre (NWGIC) and the Graham Centre for Agricultural Innovation – ends on 31 December 2021, signaling the commencement of the AWE Research Institute.

To support this strategic direction, Charles Sturt is investing to increase research capacity, and expanding business development capability to better engage with industry and government, and focus research on solving real-world problems.

AWE Research Institute objectives

The AWE Research Institute will lead in creating impactful integrated agriculture, water and environment research, grounded in our footprint across the Murray-Darling Basin but with impact across Australia and globally.

The AWE Research Institute will enable the following:

- A re-aligned operating model creating a best practice research institute to respond more efficiently to partner needs.

- Establishing Charles Sturt's brand as the leading Australian university for research in agriculture, water and the environment within 10 years.
- Increased university focus on research excellence and distinctiveness in AWE sectors, including interdisciplinary opportunities, allowing for a holistic approach to solving real-world problems.
- Building capability and culture regarding entrepreneurship and business development.
- Delivery of significant impact to regional communities and economies.
- Support for government to achieve increased economic benefit and supporting regional Australia's vibrancy, resilience and sustainability.

Expected outcomes

The AWE Research Institute will emphasise return on investment to increase productivity for farmers, improve natural environments, and reduce risk in agricultural and environmental management.

Bold, innovative solutions that engage multiple disciplines from within and outside AWE and actively co-design research with end users will be used to solve core challenges.

Locally made, globally applicable – Charles Sturt will use its footprint across multiple climatic regions as a research test-bed.

AWE Research Institute focus

The AWE Research Institute will maintain Charles Sturt's existing research program and relationships, in particular with Research Development Corporations, key State and Commonwealth departments and agencies, and private industry to achieve outstanding outcomes.

In an exciting new development, the Institute will also undertake multi- and interdisciplinary research and innovation, focusing on two particular areas.

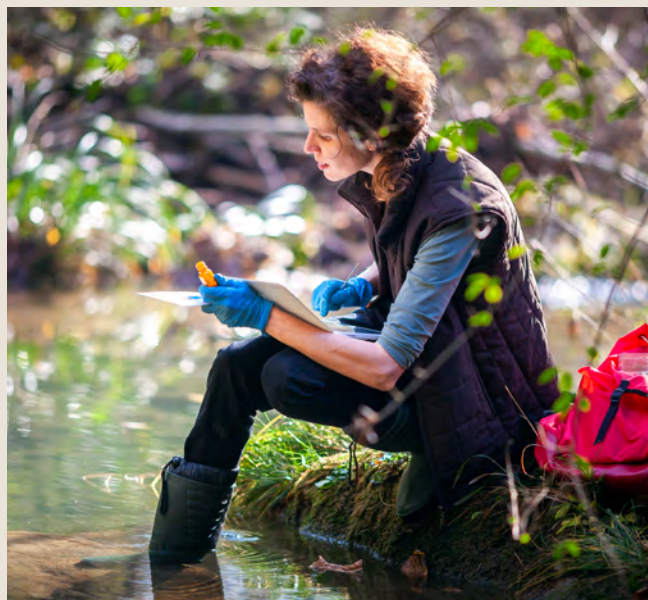
Optimising farm systems for performance and sustainability, prioritising:

- land use for and management of livestock and cropping to enhance resilience and reduce risk
- increasing grain quality and value
- spatially and digitally directed agriculture for cropping, livestock and horticulture
- on-farm biosecurity practices.

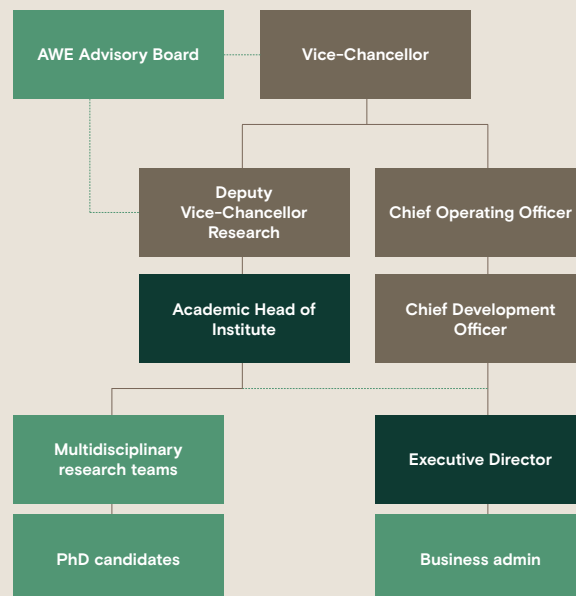
Enhancing the health and resilience of freshwater ecosystems, prioritising:

- building drought-resilient freshwater systems through better management
- inland wetland ecosystem function in response to altered hydrologies
- improving fisheries and fisheries passage
- ecology and biodiversity conservation in freshwater environments
- social ecological systems and adaptive management of inland water access and equity.

These focus areas will be supported by enabling science disciplines relating to data; soil; and geospatial, economics and social sciences. Our broad disciplinary engagement, and making better use of research capability, will be key to success.



Approved structure



What else is changing?

- We are investing in thirty research-focused positions within the Institute, that will deliver impactful outcomes for, and with, our research partners.
- Providing dedicated business development support to work with partners, enabling the Institute to better meet industry, government and community needs.
- We have ambitious targets to grow our PhD student cohort, and train the next generation of outstanding researchers.
- Establishing an advisory committee (containing relevant, influential external members) to advise, guide, and link external stakeholders to Council, the Vice-Chancellor and Deputy Vice-Chancellor Research.

Where can I get more information?

For further information about the AEW Research Institute and our research strategy, email research_strategy@csu.edu.au

We will put you in contact with one of our senior staff:

- Hon. Niall Blair – Strategic Adviser and Professor of Food Sustainability
- Dr Jamin Forbes – Director Business Development
- Professor Michael Friend – Acting Deputy Vice-Chancellor Research

The AWE Research Institute will commence operations in January 2022.



1800 275 278
(free call within Australia)

+61 1800 275 278
(callers outside Australia)



csu.edu.au



research_strategy@csu.edu.au



[charlessturtuni](https://www.facebook.com/charlessturtuni)



[charlessturtuni](https://www.instagram.com/charlessturtuni)



[charlessturtuni](https://twitter.com/charlessturtuni)



[charlessturtuni](https://www.snapchat.com/add/charlessturtuni)



[charlessturtuni](https://www.youtube.com/charlessturtuni)



Charles Sturt
University

The Commonwealth Register of Institutions and Courses for Overseas Students (CRICOS) Provider Number for Charles Sturt University is 00005F. © Charles Sturt University, 2021. M1239. V-01.