

The CSU Regional Archives is currently extending its opening hours to include the first Saturday of the month. This initiative has been put in place to cater for those researchers who are unable to visit the archives on weekdays during normal business hours. The next Saturday opening will be on February 1, 2014, from 10am to 3pm.

what you need to know

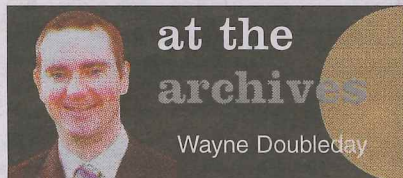
The CSU Regional Archives are open Monday to Friday, 9am to 5pm. Located in the Blakemore Building on South Campus of the university, access can be gained via College Avenue or Hely Avenue. Members of the public are welcome to visit the search room, where professional archival staff can assist with inquiries. For those people unable to visit the archives in person, staff can provide a research service for straight-forward inquiries for a fee of \$55 per hour including copying and postage. For further information, phone 02 6925 3666, email archive@csu.edu.au, or visit our website at www.csu.edu.au/research/archives for a full listing of holdings and more detailed information.



Blacksmith and carpenter's shop, 1891

HISTORY IN A PICTURE

Photographs from England shed light on station life



at the archives

Wayne Doubleday

In late 2013, the CSU Regional Archives was very fortunate to be contacted by Mr Martin Herring from England, who had in his possession five rare photographs of Toganmain Station taken in 1891.

Through the generosity of Mr Herring, these photographs have been donated to the Regional Archives, and we are now able to gain a pictorial insight into life on one of the Riverina's largest pastoral properties.

It is believed that the photos were sent back to England by a 15-year-old John Shephard, who was serving in the Merchant Navy. John was sending the photos to his sister (who is Mr Herring's maternal grandmother).

Unfortunately, John died in 1918 when his ship was torpedoed by a German U-boat off the Irish Coast. To this day, it is not known how young John came into possession of these photos of Toganmain or if he ever visited the station.

Toganmain Station, located between Darlington Point and Carrathool on the southern side of the



ABOVE: Group of station hands, 1891. BELOW LEFT: Wool Scour, 1891. BELOW RIGHT: Toganmain Station, 1891.

Murrumbidgee River, was one of the principal grazing properties in the Riverina. It was first established by Sir Alexander Macleay before being sold to Thomas Robertson in 1876.

It then remained in the Robertson family until 1988.

In 1893 (just two years after the photographs were taken) Toganmain Station exceeded just over 300,000 acres in size, and was bounded by

extensive Murrumbidgee River frontage.

The homestead and accompanying outbuildings resembled a little colony including barracks, stores, and a carpenter and blacksmith's shop.

Even in 1893, the homestead already had electric lights installed, and telephonic communication with the outstations of Toganmain were also in place (in some places

stretching over 25 miles).

The Toganmain wool shed was a fine structure measuring 240 feet in length and 80 feet in width.

When shearing took place it was not unusual to have 60 shearers engaged, along with rouseabouts, cooks and shearing hands, as well as another 30 men employed on contract to work at wool scouring. In total it was not unusual to have more than 150 men employed to complete shearing.

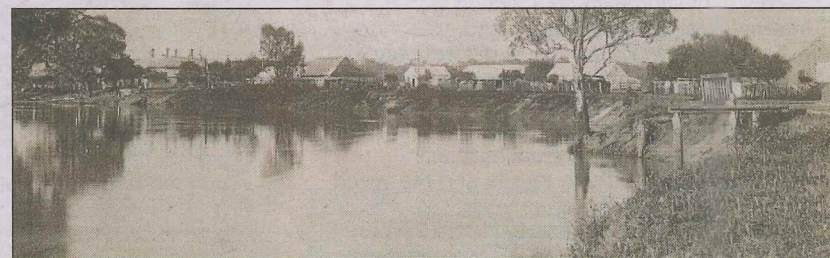
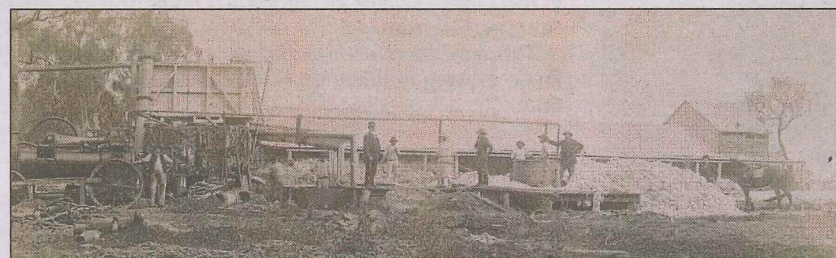
Amazingly, in 1891 a total of 218,000 sheep were shorn at Toganmain. The wool clip from Toganmain Station also had an excellent and enviable reputation for both quality and style in Australian and English wool trade circles.

The CSU Regional Archives has an existing collection of records documenting Toganmain and Cooinbil Stations during the mid to late 20th century.

The State Library of NSW also has an extensive collection of earlier records from Toganmain which cover the 19th century.

References:

State Library of NSW – www.sl.nsw.gov.au; Obituaries Australia – John Seymour Robertson – www.oz.au/obituary/robertson-john-seymour-865; Mackenzie's Riverina: A Tour of the Hay District Pastoral Holdings in the 1890s (2nd ed) – Hay Historical Society.



SEARCH HISTORIC NEWSPAPERS ON LINE

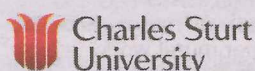
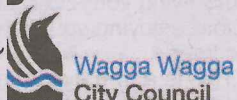


Trove

... then visit www.trove.nla.gov.au/newspaper

for your Treasure Trove of Riverina history

The Daily Advertiser



Wagga and District Historical Society

